

**LED Area Light**  
XALE Series

**Features**

- LED: Lumileds
- Color Rendering Index (CRI): > 70
- Long LED life; L<sub>70</sub> > 150,000 hours. L<sub>70</sub> hours are IES TM-21-11 calculated hours.
- Rated for Ambient Temperatures between -40°C/-40°F to 40°C/104°F
- Power Factor (PF) > 0.9
- Total Harmonic Distribution (THD) < 20%
- Surge protection: 6kV
- Fixtures include approx. 1 m (3.3 ft.) long input power cable stripped at ends
- Dimmable: 0-10Vdc
- Ultra-durable Powder Coat Paint
- UL/cUL Listed
- IP65
- Warranty: 5 years

**Mounting Options**

- 6.5" long mounting arm is included with the fixture for square pole mounting
- Slip Fitter (XLE-SF), accessory, can be used to attach fixture to a 2<sup>3</sup>/<sub>8</sub>" OD tenon, (2-inch pipe).
- A round pole adapter (XAL-RPA), accessory, can be used to mount this fixture on round poles, up to 5" diameter.

Project:	
Catalog#:	
Approved by:	

**Applications**

- Security
- Outdoor Lighting
- Hotels
- Warehouses
- Parking Lots
- Street Lights
- Parks

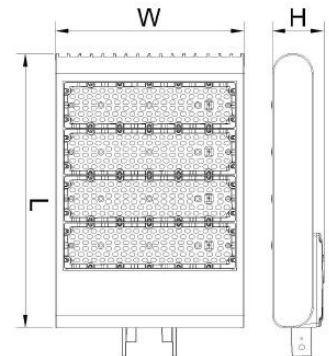


**Ordering Information**

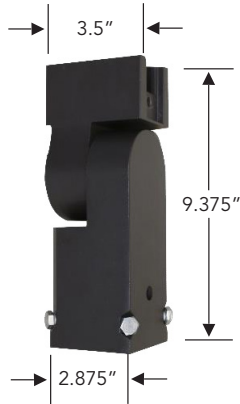
Model Name	Color Temp (CCT)	Input Power (W)	Delivered Lumens	Input Voltage	Driver	Light Distribution	Housing Color	Comparable to HID
<b>XALE-5150-MV-T4-TBK</b>	5000	150	20,680	120-277V	Towin	Type 4	Black	400W
<b>XALE-5300-HV-T3-M</b>	5000	302	41,902	277-480V	Meanwell	Type 3	Bronze	1000W
<b>XALE-5300-MV-T3-I</b>	5000	293	40,718	120-277V	Inventronics	Type 3	Bronze	1000W

**Dimensions**

Model	Length (in)	Width (in)	Height (in)	Mounting Arm (in)	Effective Projected Area EPA (sf)	Weight (lbs)
XALE-100	11	12 <sup>5</sup> / <sub>8</sub>	3 <sup>3</sup> / <sub>8</sub>	Length: 6 <sup>1</sup> / <sub>2</sub>	2.25	14.5
XALE-150				Depth: 3 <sup>1</sup> / <sub>2</sub>		
XALE-300	18 <sup>1</sup> / <sub>2</sub>		3 <sup>1</sup> / <sub>2</sub>	Height: 7		



**Accessories**



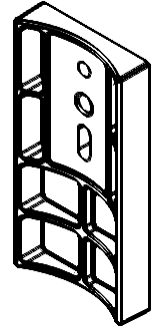
**XLE-SF:** Slip Fitter  
Fits up to 2.375" OD tenon (2-inch pipe)



**XLE-TR:** Trunion (100/150/230W models)



**XLE-TRL:** Trunion (300W model)



**XAL-RPA:** Round Pole Adapter  
(Fits up to 5" diameter pipes)

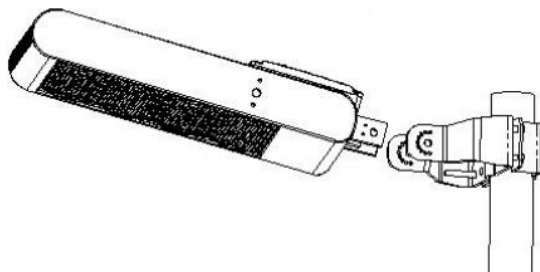
**Mounting Hole Guide**

<u>XALE with standard ARM attachment</u>	<u>Trunion Details</u>	
	<u>For 100, 150, &amp; 230W w/ trunion (XLE-TR)</u>	<u>For 300W w/ trunion (XLE-TRL)</u>

**Accessories that work with Trunion Only**

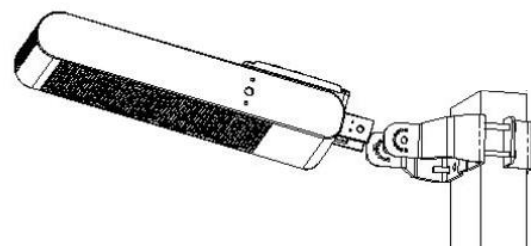
Mounting on round poles (works with Trunion only)

Mounting on square poles (works with Trunion only)



For 100, 150, & 230W models

For 300W model F



or 100, 150, & 230W models

For 300W model



**XLE-TR-RPM**

Round Pole Mount

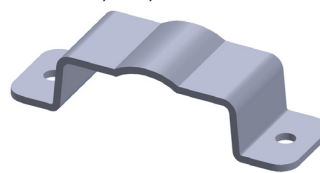
Fits 2" - 4.3" diameter pole



**XLE-TR-RPML**

Round Pole Mount Large

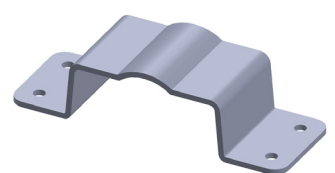
Fits 2" - 4.7" diameter pole



**XLE-TR-SPM**

Square Pole Mount

Fits 2" - 3.5" square pole



**XLE-TR-SPML**

Square Pole Mount Large

Fits 2" - 3.9" square pole