

LED Area Light

XAL Series **Limited Quantities Available**

Project:	
Catalog#:	
Approved by:	

Features

- LED: Lumileds
- Color Temperature: 5000K (cool white)
- Color Rendering Index (CRI): > 80
- Long LED life; L₇₀ > 60,000 hours. L₇₀ hours are IES TM-21-11 calculated hours.
- Rated for Ambient Temperatures up to 40°C/104°F
- Power Factor (PF) > 0.9
- Total Harmonic Distribution (THD) < 20%
- Input Voltage: 120 – 277V; 50/60 Hz
- Dimmable: 0-10Vdc
- Distribution: Type III
- Ultra-durable Powder Coat Paint
- Standard Color Bronze
- UL/cUL Listed
- IP65
- Warranty: 5 years

Applications

- Security
- Outdoor Lighting
- Hotels
- Warehouses
- Parking Lots
- Street Lights
- Parks

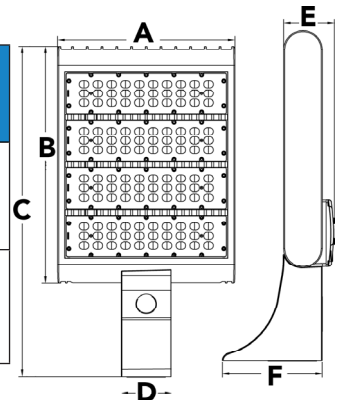


Options

- 6" long mounting arm pre-installed for square pole mounting
- Slip Fitter (XFL-SF), accessory, can be used to attach fixture to a 2 3/8" OD tenon (2-inch pipe).
- A round pole adapter (XAL-RPA) accessory, can be used to mount this fixture on round poles, up to 5" diameter.

Dimensions

Model	A	B	C	D	E	F	Effective Projected Area (sf)	Weight
XAL-5080	12 5/8	9 7/8	16 1/2	3 5/8	3 7/16	7 1/8	Top 1.24 Side 0.50 Front 0.49	12.8 lbs
XAL-5220	12 5/8	17	23 5/8	3 5/8	3 5/8	7 1/8	Top 1.99 Side 0.66 Front 0.51	25.0 lbs



All dimensions in inches

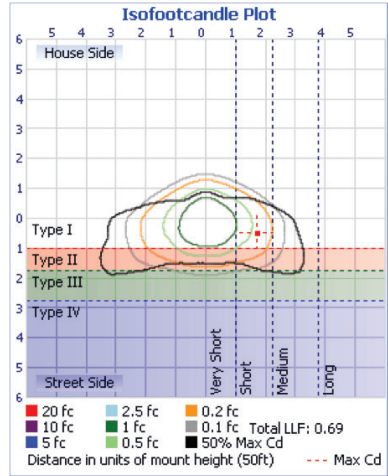
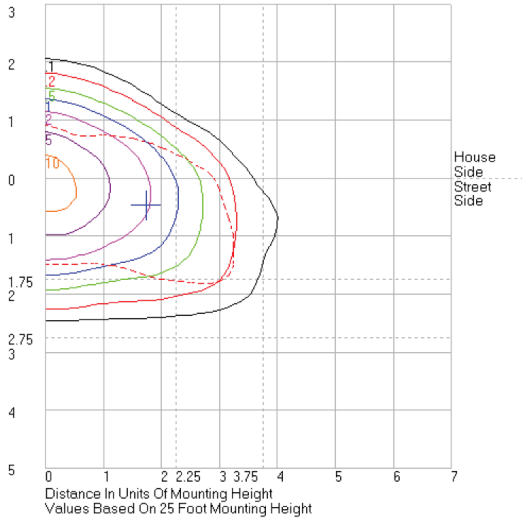
XAL Series LED Area Light

Model	CCT	Input Power	Lumen Output	Efficacy	Voltage	Mounting	Comparable to HID
XAL-5080-LED-MV	5000K	78W	9,601	123 LPW	120-277V	Arm	200W
XAL-5220-LED-MV	5000K	227W	27,114	120 LPW	120-277V	Arm	750W

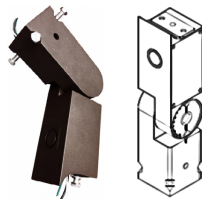
LED Area Light
XAL Series

Photometrics

Project:	
Catalog#:	
Approved by:	



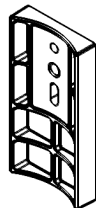
Accessories (Sold Separately)



XFL-SF: Slip Fitter
 2 3/8" OD tenon (2-inch pipe).
 Compatible with all XAL & XFL-TR Models.



XAL-TR: Trunion



XAL-RPA: Round Pole Adapter
 Can be used to mount this fixture on round poles, up to 5" diameter.