

Mogul-Base LED Replacement Lamp
3000K, 4000K / 36W, 45W, 54W / 145 Lm/W

Project:	
Catalog#:	
Approved by:	



**No Ballast needed (UL Type B)
Internal driver/line voltage lamp
Remove ballast from fixture**

Applications



Features

- 145 Lm/W
- Power Factor: >0.9
- CCT: 3000K or 4000K; CRI: >80
- Long Life: 10 years
- Operating temperature range: -40°C (-40°F) to +60°C (140°F)
- IP64 Design - Driver is fully potted with silicone.
- Waterproof, dust proof, and bug proof
- Flame retardant material
- Suitable for totally enclosed fixtures
- Built in 4kV surge protection
- UL/cUL Listed, UL Classified
- 100-277 VAC, 50/60Hz
- Non-dimming
- Warranty: 5 Years
- No Fan



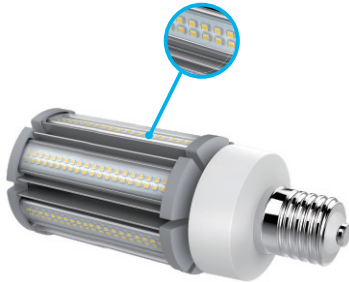
Ordering Information								
Catalog #	Lumens	CCT	Watts	Lm/W	Cover	Base	Dimensions	Replacement up to
LEDMR2-3036-MV	5,200	3000K	36W	145	Clear	Ex39 Mogul Base	Φ3.35"x8.82"	175W HPS MH
LEDMR2-3045-MV	6,500	3000K	45W				Φ3.35"x10.0"	200W HPS MH
LEDMR2-4045-MV		4000K						
LEDMR2-3054-MV	7,800	3000K	54W				250W HPS MH	
LEDMR2-4054-MV		4000K						



REPLACE



2835 145lm/W



Omnidirectional type



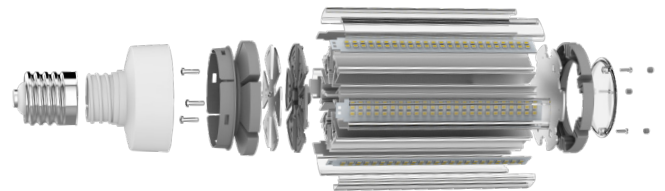
Flame retardant material



Dimensions (in)

LEDMR2 vs. Common Lamp Sizes

Lamp	Base	L (in.)	D (in.)
LEDMR2-XX36-MV	Ex39	8.82	3.35
LEDMR2-XX45-MV		10.00	
LEDMR2-XX54-MV		10.56	
LEDMR2-XX63-MV	E39	7.75	2.94
LU150/55		9.65	2.25
LU250		8.31	3.5
LU310			
MH250/U			



Accessories (sold separately)



Mogul Socket
LH-MOE-01



Twist lock long life photocontrol
Multi-volt, fail-on, 8A at 120V
and 5A at 277V
HI-LL-127-15-BK-A