

LED Area Light

XALE Series

Features

- LED: Lumileds
- Color Rendering Index (CRI): > 70
- Long LED life; L₇₀ > 150,000 hours. L₇₀ hours are IES TM-21-11 calculated hours.
- Rated for Ambient Temperatures between -40°C/-40°F to 40°C/104°F
- Power Factor (PF) > 0.9
- Total Harmonic Distribution (THD) < 20%
- Surge protection: 6kV
- Fixtures include approx. 1 m (3.3 ft.) long input power cable stripped at ends
- Dimmable: 0-10Vdc
- Ultra-durable Powder Coat Paint
- UL/cUL Listed
- IP65
- Warranty: 5 years

Mounting Options

- 6.5" long mounting arm is included with the fixture for square pole mounting
- Slip Fitter (XLE-SF), accessory, can be used to attach fixture to a 2³/₈" OD tenon, (2-inch pipe).
- A round pole adapter (XAL-RPA), accessory, can be used to mount this fixture on round poles, up to 5" diameter.

Project:	
Catalog#:	
Approved by:	

Applications

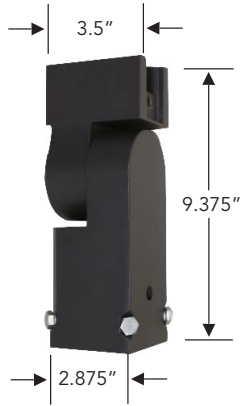
- Security
- Outdoor Lighting
- Hotels
- Warehouses
- Parking Lots
- Street Lights
- Parks



Ordering Information

Model Name	Color Temp (CCT)	Input Power (W)	Delivered Lumens	Input Voltage	Driver	Light Distribution	Housing Color	Comparable to HID	DLC ID
XALE-4100-MV-T3-T	4000	97	13,475	120-277V	Towin	Type 3	Bronze	320W	PLO2GDM6E8FK
XALE-5100-MV-T3-T	5000	97	13,475	120-277V	Towin	Type 3	Bronze	320W	PLUC05ZMFZ30
XALE-4150-HV-T3-M	4000	155	21,618	277-480V	Meanwell	Type 3	Bronze	400W	PLVX9CAI63GU
XALE-4150-MV-T3-T	4000	150	20,680	120-277V	Towin	Type 3	Bronze	400W	PLSJ6QQFI6WV
XALE-5150-MV-T3-T	5000	150	20,680	120-277V	Towin	Type 3	Bronze	400W	PLUMW1VZLNLP
XALE-5150-MV-T4-T	5000	150	20,680	120-277V	Towin	Type 4	Bronze	400W	PL9RLUDDMB4H
XALE-5150-MV-T4-T-BK	5000	150	20,680	120-277V	Towin	Type 4	Black	400W	PL9RLUDDMB4H
XALE-5150-MV-T4-T-WH	5000	150	20,680	120-277V	Towin	Type 4	White	400W	PL9RLUDDMB4H
XALE-4230-MV-T3-I	4000	227	31,312	120-277V	Inventronics	Type 3	Bronze	750W	PLYH69IAW15M
XALE-5230-MV-T3-I	5000	227	31,312	120-277V	Inventronics	Type 3	Bronze	750W	PLYHP0WAI258
XALE-5230-MV-T4-I-BK	5000	227	31,312	120-277V	Inventronics	Type 4	Black	750W	PL0D4XKY54PN
XALE-4300-HV-T3-M	4000	302	41,902	277-480V	Meanwell	Type 3	Bronze	1000W	PLRFKPOSL7CP
XALE-4300-MV-T3-I	4000	293	40,718	120-277V	Inventronics	Type 3	Bronze	1000W	PLF9A9ZZE1AI
XALE-4300-MV-T4-I	4000	293	40,718	120-277V	Inventronics	Type 4	Bronze	1000W	PLSGCA4NGIP5
XALE-5300-MV-T3-I	5000	293	40,718	120-277V	Inventronics	Type 3	Bronze	1000W	PL0OMT1VJJAV

Accessories



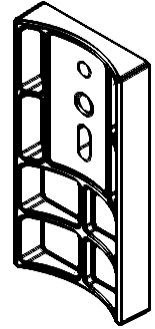
XLE-SF: Slip Fitter
Fits up to 2.375" OD tenon (2-inch pipe)



XLE-TR: Trunion (100/150/230W models)



XLE-TRL: Trunion (300W model)



XAL-RPA: Round Pole Adapter
(Fits up to 5" diameter pipes)

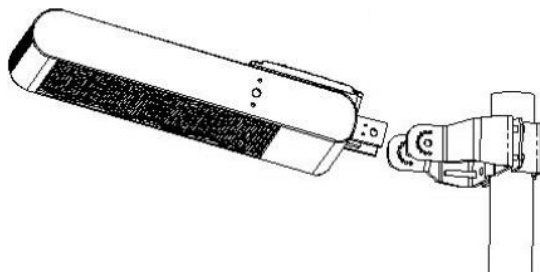
Mounting Hole Guide

<u>XALE with standard ARM attachment</u>	<u>Trunion Details</u>	
	<u>For 100, 150, & 230W w/ trunion (XLE-TR)</u>	<u>For 300W w/ trunion (XLE-TRL)</u>

Accessories that work with Trunion Only

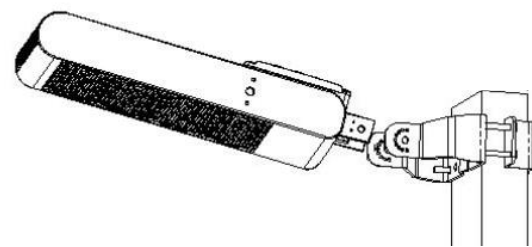
Mounting on round poles (works with Trunion only)

Mounting on square poles (works with Trunion only)



For 100, 150, & 230W models

For 300W model F



or 100, 150, & 230W models

For 300W model



XLE-TR-RPM

Round Pole Mount

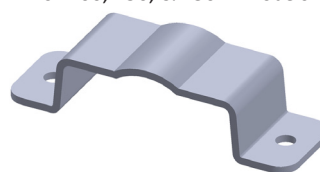
Fits 2" - 4.3" diameter pole



XLE-TR-RPML

Round Pole Mount Large

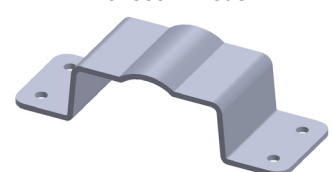
Fits 2" - 4.7" diameter pole



XLE-TR-SPM

Square Pole Mount

Fits 2" - 3.5" square pole



XLE-TR-SPML

Square Pole Mount Large

Fits 2" - 3.9" square pole

Dimensions

Model	Length (in)	Width (in)	Height (in)	Mounting Arm (in)	Effective Projected Area EPA (sf)	Weight (lbs)
XALE-100	11	12 $\frac{5}{8}$	3 $\frac{3}{8}$	Length: 6 $\frac{1}{2}$	2.25	14.5
XALE-150						
XALE-230	14 $\frac{1}{8}$		3 $\frac{1}{2}$	7	Depth: 3 $\frac{1}{2}$	2.67
XALE-300	18 $\frac{1}{2}$	3.29			25	

