

Highbay LED-Ready
Six Lamp Positions
Four Foot - Curved Profile Design
Lamps NOT Included




Proudly
Designed & Assembled
IN THE USA*

Description

The HFA3-LED Ready series high-bays are a great retrofit LED ready alternative to traditional HID highbay and fluorescent fixtures. This fixture uses 6 line voltage 4' LED lamps (Type B).

Benefits

- Energy Saving Compared to HID systems
- Quality Lamp holders
- Computer Designed Reflectors

Compatible with **F32T8/8xx/LED/16W/AC** & **F32T8/8xxLED/12.5W/AC** Linear LED Lamps



click image for spec sheets

LAMPS NOT INCLUDED

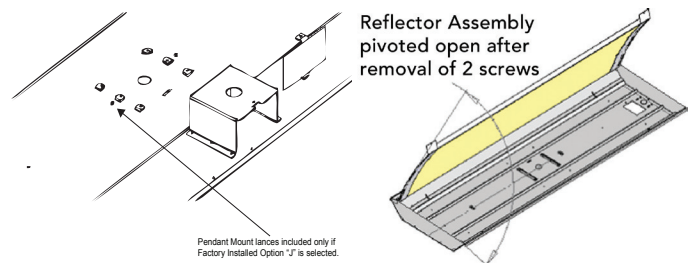
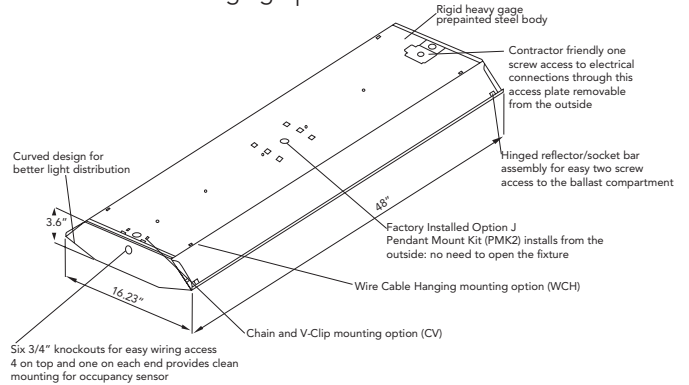
Project:	
Catalog#:	
Approved by:	

Applications

- | | |
|------------------------|-----------|
| Warehouse | Gymnasium |
| Manufacturing Facility | Cafeteria |
| Auditorium | |

Features

- No ballast installed
- Includes shunted and non-shunted T8 lamp holder so they are compatible with single-ended and double-ended 4' LED tubes (Type B)
- Easy access to wiring compartment
- Access plate provides access to electrical wiring with-out the need to open the fixture
- Knock-outs for easy electrical wiring and assembly
- Heavy Duty pre-painted steel construction
- Can be easily mounted by a single person
- Suspended mounting insures a quick painless install
- Chain and V-Clip Hanging option
- Standard specular aluminum reflector (86%)
- Wire cable hanging option.



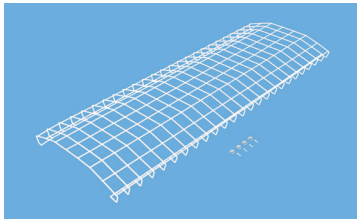
Ordering Information

Model	No. of Lamp Positions**	Reflector	(L) Length	(W) Width	(H) Height
HFA3A6LT8	6	Standard Specular Aluminum (86%)	48"	16.23"	3.6"

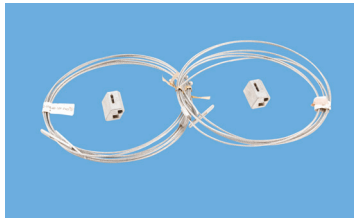
*Foreign and domestic components.

**Lamps Not Included

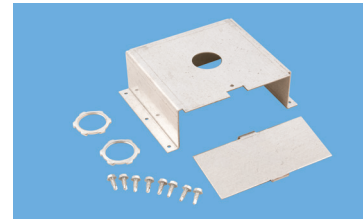
Accessories - Sold Separately



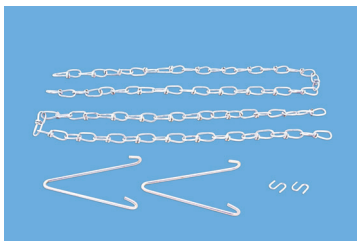
HFA3-WG
Wire Guard



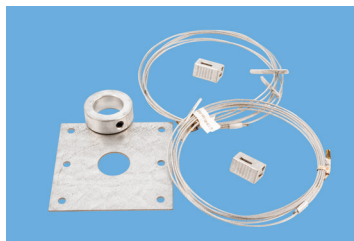
HFA-WCH
Wire Cable Hanging Kit
(2 pcs per kit)



HF-PMK2
Pendant Mount Kit
with 1.0" diameter through hole



HF-2CV (2 foot)
HF-3CV (3 foot)
Hanging Chain & V-clips



HF-SK1
Stabilizer Kit
(Hub, color and wire cable)



HFA3-WL
Wrap Lens
(Can be used with wire guard)