

# LessonCam™ Classroom Camera

FrontRow's new LessonCam is ready to help make remote-only or hybrid classroom learning as effective as possible, thanks to its superior set of features.

The LessonCam is a PTZ (Pan, Tilt, Zoom) camera that integrates with our all-in-one classroom sound system, the Juno. This powerful combination creates a comprehensive learning solution for students inside and outside the classroom by seamlessly integrating audio and video with popular video conferencing solutions like Zoom®, Google Meet®, Teams®, Skype® and more.

Students are more engaged because teachers can be more dynamic. The LessonCam shoots in HD and has a 12x optical zoom, so teachers are free to stand in front of a flat panel display or whiteboard, pan to another part of the room, or zoom in for a closeup of a hands-on demonstration.

Teachers are no longer tethered to their computer webcam and lessons can easily be recorded and shared for asynchronous learning.

LessonCam is controlled completely by the teacher and has both a power light and designated off position to clearly indicate when the camera is or is not in use. Our plug-and-play solution connects to the teacher's computer with a single USB cable and does not require an additional network drop, license or subscription to operate.



## How it works

The LessonCam mounts to the Juno and connects to the USB port on the teacher's computer and the teacher wears the pendant microphone. When the teacher speaks or plays a video from the computer, their voice and audio are amplified in the classroom and heard by the remote students.

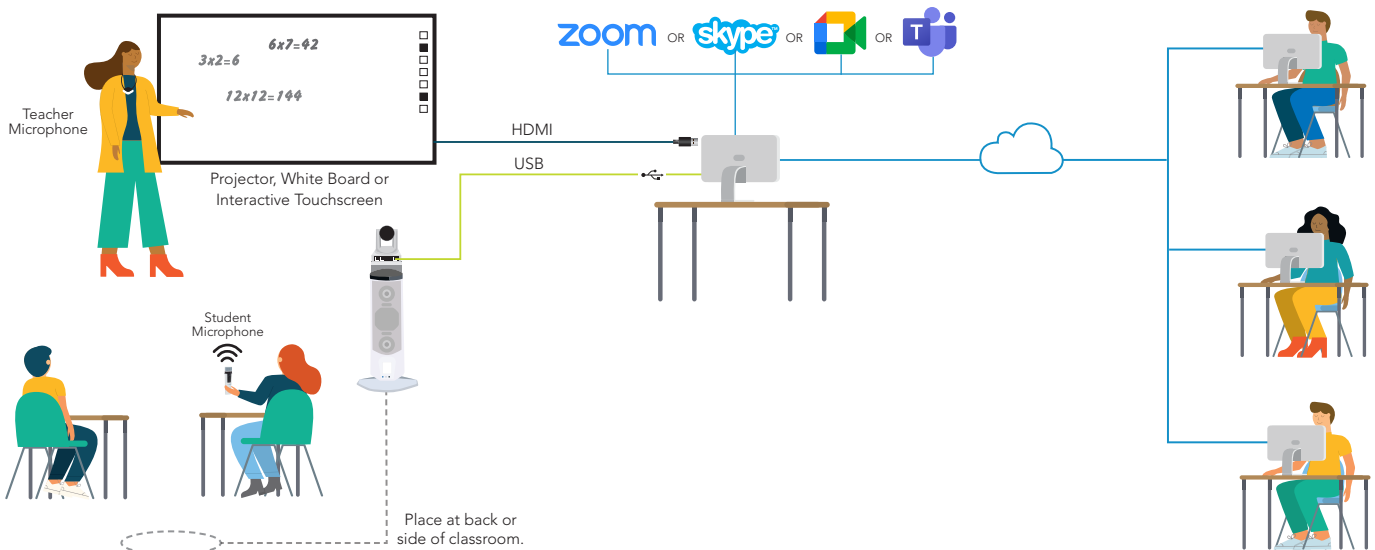
**All students can see the teacher or other media equally**  
Using "Screen Share", teachers can share content from their interactive panel, live video from the FrontRow LessonCam, document camera or computer video.

**All students can participate equally**  
When remote students are unmuted by the teacher, their voices are distributed in the classroom. When classroom students use the student microphone, their voices are amplified in the classroom and streamed online to remote students.

**All students can stay caught up**  
Using remote conferencing recording functions or FrontRow's Teacher Edition, lessons can be recorded, shared and archived so students can access lessons for review at their convenience.

### Classroom

### Remote Students



## LessonCam Camera

### SPECIFICATIONS

<b>Sensor</b>	1/2.8" HD CMOS sensor, 2.0MP
<b>Resolution</b>	Up to 1920 x 1080p 30/25/20/15
<b>Compression</b>	H.264, H.265
<b>Video Interface</b>	USB 2.0
<b>LAN Interface</b>	VISCA, ONVIF, RTSP & RTMP supported
<b>Control Signal Interface</b>	RS-232, RS-485
<b>Control Protocol</b>	VISCA/Pelco-D/Pelco-P; Baud Rate: 115200/9600/4800/2400bps
<b>Zoom</b>	12x lossless true optical zoom
<b>Field of view</b>	Horizontal 72.5° (wide) ~ 6.3° (tele)
<b>Mechanical pan</b>	±170°
<b>Mechanical tilt</b>	-30° ~ +90°
<b>Control</b>	FrontRow LessonCam app
<b>Dimensions (wxhxd)</b>	150 x 167.5 x 150mm / 5.9 x 6.6 x 5.9in
<b>Weight</b>	1.4kg / 3lbs
<b>Power</b>	12VDC, converted from Juno power supply



## LessonCam Mounting Bracket

### SPECIFICATIONS

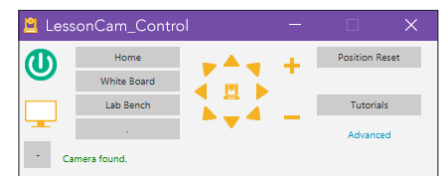
<b>Dimensions (wxhxd)</b>	15.2 x 26.5 x 15.2cm / 6 x 10.375 x 6in
<b>Compatibility</b>	Juno, Juno Connect
<b>Mounting</b>	VESA 100mm x 100mm compatible
<b>Connectivity</b>	Integrated cable harness for power, control and audio/video integration
<b>Computer Integration</b>	15m/50ft USB-B to USB-A cable (included)



## LessonCam Control Software

Installs on teacher computer to control camera settings and PTZ functionality. Viewer window allows camera and desktop content to be shared simultaneously.

- 4 camera presets
- Resizable camera viewer window
- Advanced color settings
- Java-based, Mac and PC compatible



Learn more at [www.gofrontrow.com](http://www.gofrontrow.com)