

# ELMO CVAS

Single Room Control System



Customizable Interface

Flexible Integration

Powerful Control

## **All-in-One, Single Room Control.**

The **ELMO CVAS Room Control System** was designed as a cost-effective and fast deployment tool to help you control the devices in your meeting room, classroom, or courtroom with one, easy-to-use touch interface.

# All-in-one, single room Complete



- 7" Touchscreen
- PoE Powered

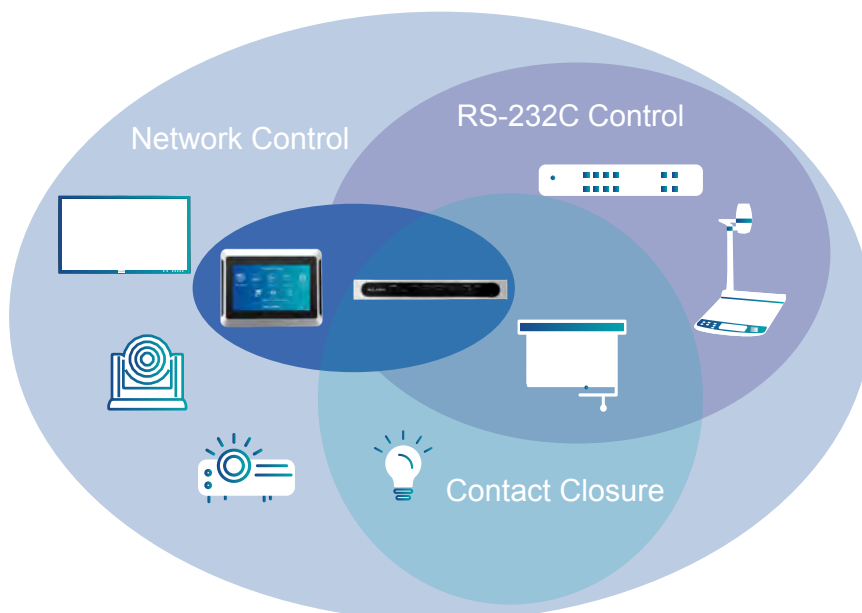
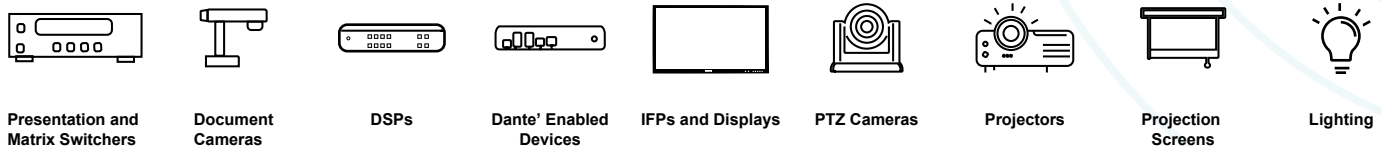
## CVAS TPC07 Touch Controller

The CVAS TPC07 can seamlessly control your room devices from the bright, 7-inch, Android powered touchscreen. The PoE powered TPC07 includes a table stand and wall mounting points making installation a breeze in any space.

Operate your network controllable devices using the TPC07 without needing cloud services, hidden control boxes, internet access, or recurring license fees.

# The <sup>ELMO</sup>CVAS

## Centralized Device Control



- ✓ All-in-one Design
- ✓ Fast System Deployment
- ✓ Fully Customizable Interface
- ✓ Requires only a network connection

# control

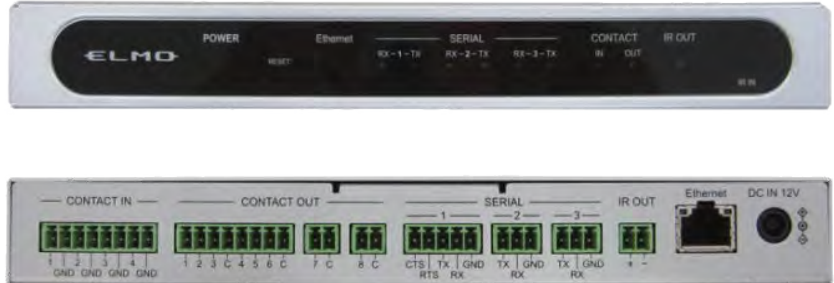
## IP and Legacy Control.

### CVAS System IFBOX

The IFBOX gives your CVAS System seamless control of up to eight non-network-controlled devices with RS-232, Contact Closure, and Infrared.

Add additional units for more legacy devices.

- Compact formfactor
- Scalable



CVAS System Legacy Support

# System

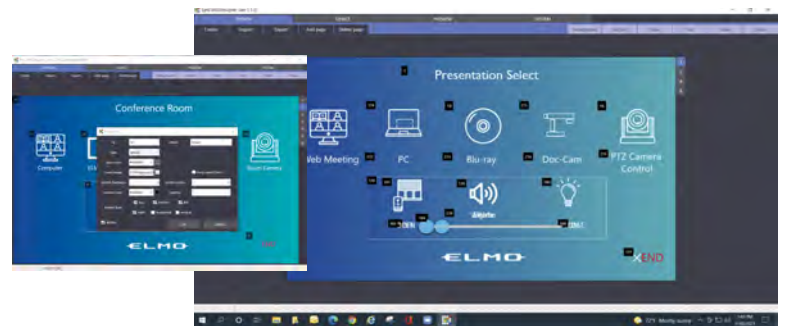
## CVAS Designer Software

The included CVAS Designer software makes it easy to customize the user interface with the included library of icons and backgrounds or add your own to satisfy every project.

No certifications, classes, or long learning curves needed with this easy to program, intuitive software. Cut, paste, drag, and drop features make the Designer Software quickly feel familiar to use.

With an included library of embedded commands for leading manufacturers and the ease of adding additional commands, turnaround time is fast and painless.

No customizing limitations when compared to a static, hard button controller.



**Lecture Hall**  
 Projector  
 Screen  
 Lighting  
 Audio  
 Document Camera



**Interactive Classroom**  
 Interactive Display  
 Document Camera  
 Blu-Ray Player  
 Audio  
 Lighting

**Meeting Room**  
 Display  
 PTZ Camera  
 Lighting  
 Shades  
 Document Camera



**Home Theater**  
 Television  
 Sound Bar  
 Blu-Ray Player  
 Streaming Device  
 Lighting

# Powerful, Flexible Control.

Peace-of-mind, world-class ELMO support is behind every CVAS System. Your projects will be ready to deploy faster with access to pre-designed templates, programming assistance and video tutorials.



rAve [PUBS] Best New AV-over-IP Control Solution

	Item	Description	
7" Touch Panel Controller: TPC07	Operating Temperature	0 C° ~ 40 C° (32F° ~ 104 F° )	
	Operating Humidity	30% ~ 80% (No condensation)	
	Power Source	DC 5V (from supplied AC adapter) 802.3af PoE - Device Class 3	
	Power Consumption	8.5W	
	Main Unit Control Port	Ethernet ×1 RJ45 connector 10/100 Base- T	
	Interface	USB2.0 Type A × 1 (for data transfer) SD card slot ×1 (for data transfer)	
	Touchscreen	Screen size: 7 inch	Resolution: 1024 x 600
		Angle of view: vertical 160° / horizontal 160°	
		Control Protocols	TCP/IP, UDP/IP, Telnet, SSH, HTTP/HTTPS
	Mounting	VESA 75 x 75mm (Stand Included)	
	Outside Dimensions	W: 206mm (8.11") D: 104mm (4.09") H: 125mm (4.92")	
	Weight	Approx. 750 g (1.65lbs)	
Legacy Controller: IFBOX	Operating Temperature	0 C° ~ 40 C° (32F° ~ 104 F° )	
	Operating Humidity	30% ~ 80% (No condensation)	
	Power Source	DC12V (from supplied AC adapter)	
	Power Consumption	9.6W	
	Control Port	Serial port: RS-232C ×3 (3-pin x 2, 5-pin x 1)	Non-voltage contact input x4 (8-pin x1)
		Relay contact output × 8: Contact capacity (DC24V 1A) (8-pin port x1, 2-pin port x2)	IR signal output: 2-pin port x 1 (IR learning available)
		Main Unit Control Port	Ethernet × 1 RJ45 connector (10/100 Base- T)
	Outside Dimensions	W: 208mm (8.19") D: 132mm (5.2") H: 27mm (1.06") Excl. projecting parts	
Weight	Approx. 700 g (1.54 lbs)		
SynCVAS Designer	OS	Windows 11 / 10 / 8.1 (32/64 bit) *Tablet mode not supported	
	CPU	2GHz or higher multi-core processor recommended	
	RAM	2GB or more	
	Resolution	1024 x 768 or higher	
	Application Size	22 MB	
	Included	IR Learning tool Macro Creating tool	

ELMO USA Corp.  
6851 Jericho Turnpike  
Suite 145  
Syosset, NY 11791  
www.elmousa.com  
516-501-1400



To see the spec table or for more information on CVAS, please visit our website by scanning the QR Code here.

