



HI-Core



HI-Core

The HI-Core cart line is the innovative blending of convenience, customization, quality engineering, and affordability. Lightweight and easy to maneuver, this ergonomically designed line of carts sets the standard for mobility in point-of-care.



Features:

- Small, lightweight cart with a simple streamlined design
- Multiple accessory options available
- Spacious worksurface area (21.1" x 17.6")
- Convenient push handles integrated into the front of the worksurface
- Cable management equipment and power bricks stowed under flip up worksurface
- Gas assist worksurface height adjustment (32.9" sitting to 44.9" standing)
- Lift assist button conveniently located on right side of cart
- Keyboard tray with mouse tray and wrist rest option available for all cart versions
- Single point of charge kit includes: fused AC inlet, 8ft hospital grade coiled power cord, and AC power distribution with 3 receptacles for powering customer equipment
- Two-tiers of configurable storage options: (2) single-tier drawers, (1) 2-tier drawer, or (1) single-tier and (1) hangdown drawer
- Storage security options include: non-locking, keyed lock, or electronic keypad lock
- (4) 5" dual wheel premium casters (2 locking casters on front)
- Optional steering caster with manual activation
- Meets UL and CE standards





HI-CORE
ALL-IN-ONE CART



HI-CORE
NOTEBOOK CART
WITH KEYBOARD TRAY



HI-CORE
NOTEBOOK CART



HI-CORE
TABLET CART

multiple storage and accessory options available

some carts shown are not standard configurations/see separate detail documents for all options

Keyboard Trays

The HI-Core can be equipped with a standard keyboard tray or the space-saving slimline keyboard tray.

STANDARD KEYBOARD TRAY



- Max keyboard dimensions (17.8" W x 7.2" D x 1.8" H)
- Mouse tray slides out from beneath keyboard to right or left sides
- Includes mouse pouch with adhesive back to be positioned for optimal convenience
- Includes wrist rest
- Tray height adjusts with cart work surface (27.1" sitting to 39.1" standing)

SLIMLINE KEYBOARD TRAY



- Not Compatible with LCD/SFF or Laptop cart
- Max keyboard dimensions (16" W x 8" D x 1.3" H)
- Includes mouse pouch with adhesive back to be positioned for optimal convenience
- Includes wrist rest
- Tray height adjusts with cart work surface (30.1" sitting to 42.1" standing)



Cart Specifications

HI-CORE NOTEBOOK CART



HI-CORE NOTEBOOK CART WITH KEYBOARD TRAY



The HI-Core Notebook cart's notebook can be secured on top or placed underneath the worksurface.

NOTEBOOK CART

Notebook Support (in)	Width	15.6
	Depth	12.3
	Height	1.4

HI-CORE TABLET CART



HI-CORE ALL-IN-ONE CART



As more applications support tablet usage, the HI-Core Tablet cart configuration provides an ideal platform for mobility, with support for a variety of tablets.

- Lockable, universal tablet mount supports tablets with screen sizes ranging from 7.9" - 13", including Apple iPad Pro, iPad mini, Microsoft Surface and Samsung Galaxy
- Key lock secures tablet in mount
- Tablet mount includes tilt, swivel, rotate, and height adjustments

The HI-Core All-In-One Cart configuration is compact and efficient. It provides the optimized platform for your All-In-One computer solution.

- All-In-One Carts are compatible with All-In-Ones up to 20lbs
- VESA monitor mount has tilt, 270° swivel, rotate, and height adjustment

HI-CORE

		AIO Cart	Tablet Cart
LCD Height (in)	Min	10.3	10.3
	Max	15.1	15.1
LCD Height Adj (in)		4.8	4.8
	Down	15 °	15 °
LCD Tilt Angle (deg)	Up	60.0	60.0
		+/- 135 °	+/- 135 °

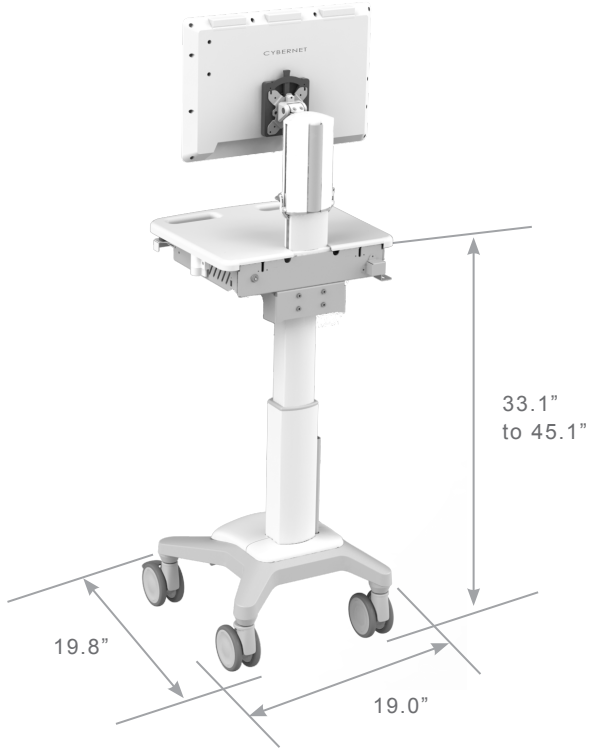
HI-CORE

	AIO Cart
AIO Size Support (in)	24"
AIO Weight Support (lbs)	20.0 lbs



Cart Dimensions

OVERALL DIMENSIONS



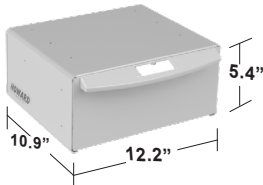
HI-CORE		
Overall Dimensions (in)	Width	21.1
	Depth	20.8
Work Surface Height Adj. (in)	Min	31.1
	Max	45.1
Base Footprint	Width	19.0
	Depth	19.8
Caster Size (in)		5.0
Writing Surface Size	Width (in)	21.0
	Depth (in)	11.3
Height Adj. Range (in)		12.0
PC Compartments		
PC Volume (in)	Width	17.0
	Depth	9.6
	Height	3.5

* Applicable carts only

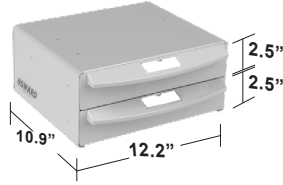
Cart Storage

There are multiple storage options available for the HI-Core. Choose any security option and any tier configuration.

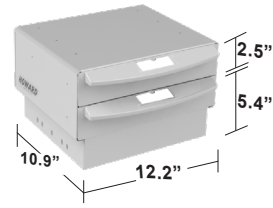
TIER CONFIGURATIONS



(1) 2-TIER DRAWER



(2) 1-TIER DRAWERS



(1) 1-TIER DRAWER
(1) 2-TIER HANGDOWN DRAWER

SECURITY OPTIONS NEED NEW FILES (BLACK KEYPAD)



DETENT ONLY (NO LOCK)



KEYED LOCK



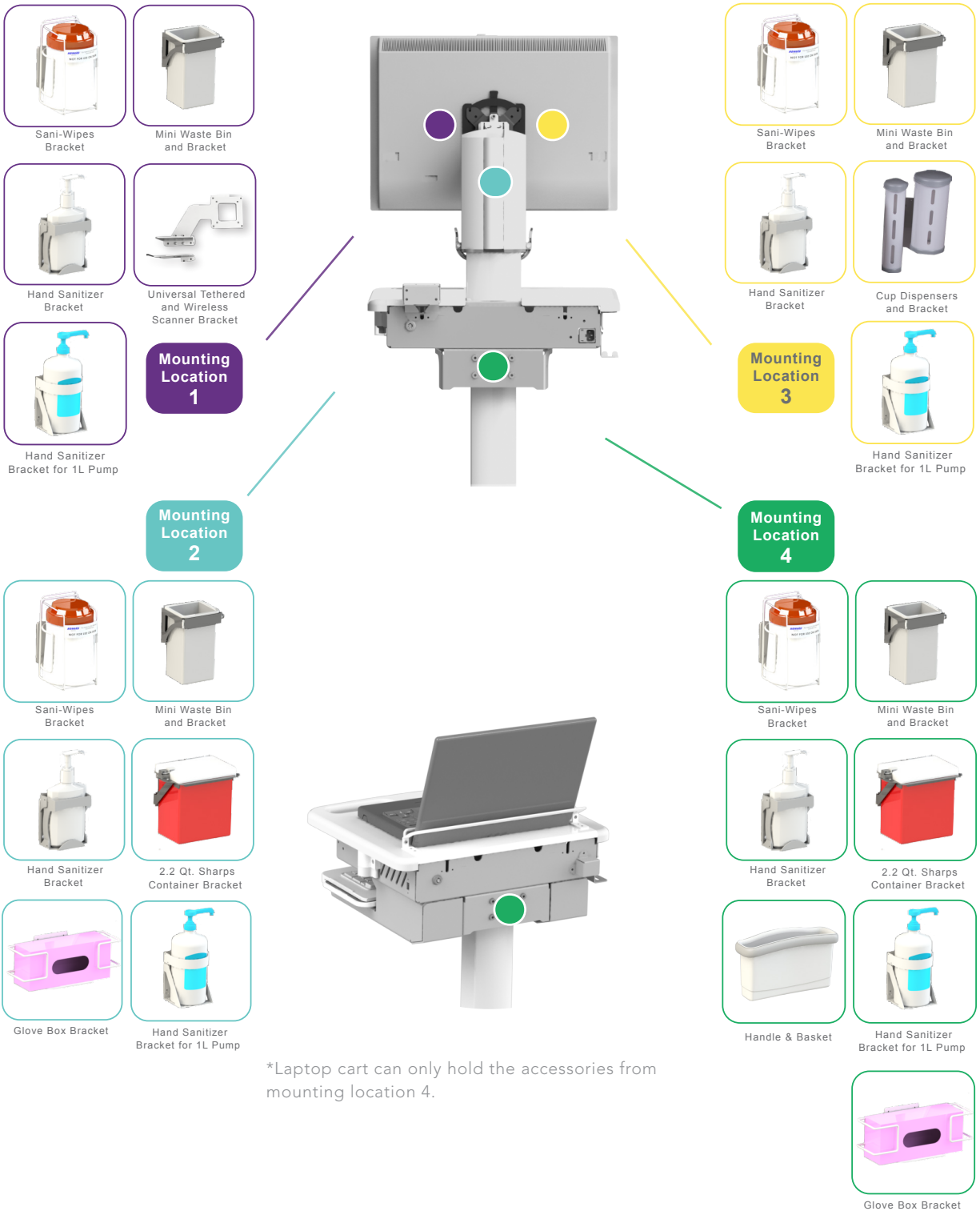
ELECTRONIC KEYPAD LOCK

- Detent only specific features:
 - Interlocking dividers included with each drawer
 - Drawers operate on Releasable Ball Bearing Slides
- Key locking specific features:
 - Interlocking dividers included with each drawer
 - Drawers operate on Releasable Ball Bearing Slides
 - Includes (2) keys for lock
- Keypad operated locking specific features:
 - Dividers included with all drawers
 - Programmable secure access to storage bins
 - Access to storage via keypad on bin module
 - Independent battery bypass for emergency access
 - Visual indicator for code entry confirmation
 - Supports 28 unique user ID (4 digits)
 - Powered by easily replaceable 2x AAA
 - Battery capable of up to 100,000 operations



Accessory Options

Howard offers several accessory mounting options and configurations that provide a smoother and more sanitary work flow. With hundreds of options and configurations available, you can tailor your cart to best fit your facility's needs and applications.



Warranty

Howard Medical's commitment to providing unmatched customer service and support continues long after a sale is final. Our technology staff provides 24/7 technical support (excluding US holidays) for as long as you own your Howard product. Our friendly, US-based team of experts will answer your questions about the product, hardware setup, or installation, and with telephone hold times of typically less than a minute.

Standard Limited Warranty on Powered Medical Carts:

- 3-year mechanical
- 3-year electrical
- 3-year lithium phosphate battery defect
- 3-year lithium phosphate battery performance

Upgraded Limited Warranty on Powered Medical Carts:

- 5-year mechanical
- 5-year electrical
- 5-year lithium phosphate battery defect
- 5-year lithium phosphate battery performance

Computers and Other Peripheral Devices:

- See manufacturer's warranty

For our full warranty information, please visit <https://www.howardcomputers.com/support/warranties.cfm> or contact your Howard Representative.

Professional Services

The Howard Medical Professional Services Team has technical specialists nationwide and is known as one of the industry's premier service providers, with a history of successfully serving clients for more than a decade. Our dedicated employees are completely focused on customer satisfaction, giving Howard Medical the resources to provide a solution that is just right for you. Whether your project is large or small, single-site or across multiple facilities, you can trust our experience to work for you!



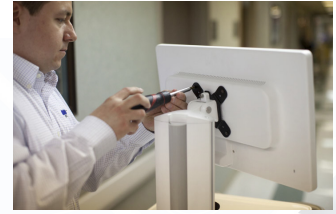
Deployment Consultation



In-Service Training



Technical Integration & Setup
Training / Consultation



Preventative Maintenance

- Annual Fleet Audit
- Care Protection Services Solutions
- Complete In-Factory Integration
- Equipment Cleaning With Disinfectants
- Equipment Disposal
- In-Factory Imaging
- In-Service Training

- On-Site Repair
- On-Site Troubleshooting
- Preventative Maintenance
- Technical Training
- Technology Installation
- Technical Integration & Setup Training/Consultation
- White-Glove Delivery With Trash Removal

Care Protection Service Solutions



**Silver Service
Level Agreement**



**Gold Service
Level Agreement**



**Platinum Service
Level Agreement**

Howard's Care Protection Service Solutions give any facility the ability to choose the level of service that works best for them. For our full services information, please visit https://www.howardcomputers.com/Support/pro_services.cfm

Howard Medical Point of Care Carts



Designed and built in Ellisville, Mississippi for over 20 years. Backed by our nationwide network of Howard Certified Technicians as well as 24/7 phone based support.

SALES REPRESENTATIVE:

TERRITORY/REGION:

EMAIL:

PHONE:

Web:
www.howard.com

Customer & Technical Support:
Toll Free: 1.888.323.3151
24/7 (excluding US holidays)

General Information:
Toll Free: 1.888.912.3151

