

WE HELP YOU
MAKE AN IMPACT
IN THE CLASSROOM



Winter - Spring 2019

Why NewLine?

Newline Interactive is a manufacturer of award-winning interactive displays, intuitive software, and other interactive innovations that are easy to use and increase student engagement in the classroom. We are THE choice for schools looking for simpler solutions to help their teachers and students succeed.

We believe that truly successful and innovative products should be easy for anyone to use. Each product Newline has introduced follows their principle of simplicity, making each interactive flat panel user-friendly and completely non-proprietary.

It is your passion to teach. Newline Interactive gets students excited to learn.

Founded to develop interactive solutions that are:

The Easiest-to-Use on the Planet

This is the cornerstone of Newline and it is the key to our success. If a solution is not easy to use, we won't bring it to the market.

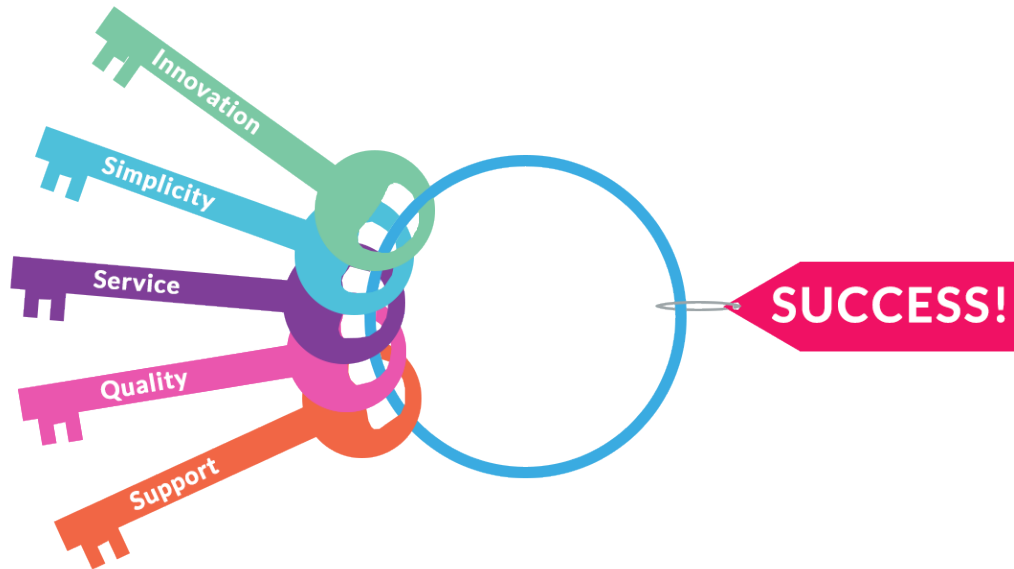
Completely Non-Proprietary

We work in your world. Our displays work with:

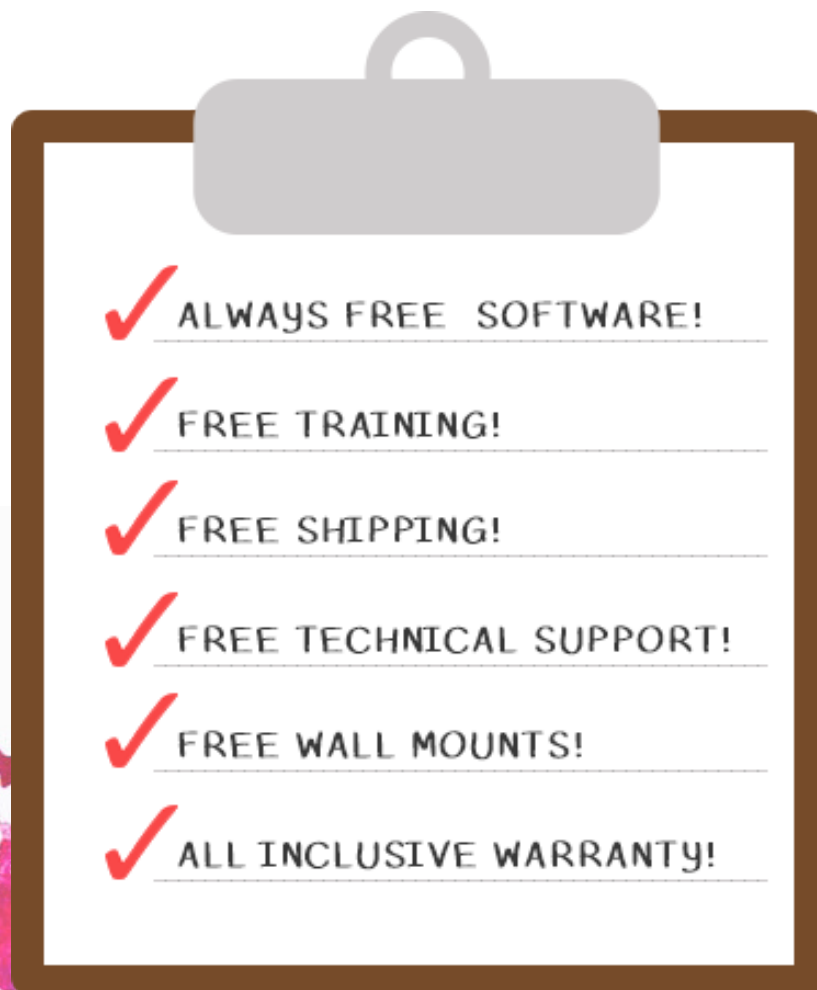


And more!

Why NewLine?



Educators love NewLine because we offer:



Our Products

TRU TOUCH *RS* Series

Visual Masterpiece.

Bring your lessons to life with the **TRU TOUCH** RS Series line of multi-touch displays.

With interactive flat panels, students become part of the lesson, actively engaging in their learning.

Capture student interest with a display that leads the industry in brightness, clarity, and student engagement.



Intuitive & Easy to Use



Completely Non-Proprietary



20-Point Multi-Touch



Stunning Ultra High Definition



Always Free Software



Education Specific User Experience



Wireless Screen Sharing



Share Files Straight to the Cloud



Object Recognition



TRU TOUCH VN Series

Crisp. Clear. Accurate.

With the **TRU TOUCH VN Series** and its object recognition ability, the panel recognizes whether you're trying to write, swipe, click, or move.

Take your lessons to the next level and ensure engagement and interest from your students.

Capture student attention on a display with an improved viewing angle and best in class image quality with our unique optical bonding technology.



Intuitive & Easy to Use



Completely Non-Proprietary



20-Point Multi-Touch



Stunning Ultra High Definition



Always Free Software



Optical Bonding Technology



Wireless Screen Sharing



Share Files Straight to the Cloud



Object Recognition



Our Products

TRU TOUCH *X* Series

Collaboration with Endless Possibilities.

Connect your classroom to the wide world outside with the **TRU TOUCH X** Series, a display built around ease of use and video conferencing.

The non-proprietary nature lets you interact your way both in the classroom, teacher training, or administrative meetings.

Explore distance learning, attend a virtual field trip, or host an internal training on a display with best-in-class image quality and our unique optical bonding technology. The only all-in-one collaboration solution for your educational needs.



Intuitive &
Easy to Use



Completely
Non-Proprietary



20-Point
Multi-Touch



Built-In
Cameras &
Microphone



Always Free
Software



Optical
Bonding
Technology



Wireless
Screen
Sharing



Share Files
Straight to
the Cloud



Object
Recognition



The Latest in Innovation

Newline AirCast



Effortlessly share your presentations with a wider audience. Cast directly to your **TRU TOUCH** from any smaller mobile device, such as a laptop, tablet or smartphone. All you need is a wireless connection!

Effortless
Wireless
Casting



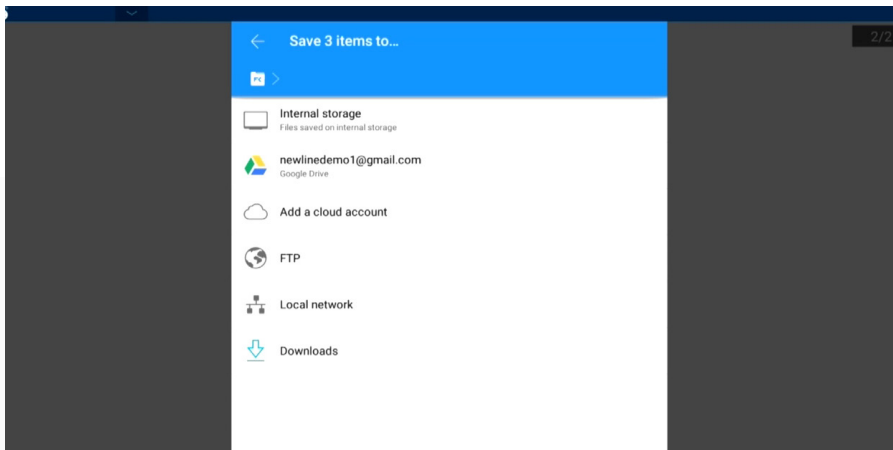
Bring Your
Own Device



No Cables
Required



TRU TOUCH File Commander



Seamlessly access all of your local files on an easy to navigate system. The **TRU TOUCH** File Commander is designed for effortless sharing. Quickly upload and share files and screenshots right to your cloud storage.

Access
the Cloud



Easily
Navigate
Files



Share
Screenshots



Accessories

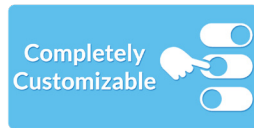
X10D Android Mini-Computer



Give your **TRU**TOUCH a bigger boost. Connect the X10D to your **TRU**TOUCH and download your favorite apps from the built-in Google Play Store.

Use your finger to interact with the intuitive screen. Customize the X10D home menu to make accessing your favorite apps easier than ever.

With access to over a million apps, the X10D brings you the programs you need right to your display in a high performance, easy to use mini-computer.



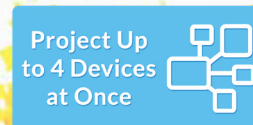
TRUCAST



Lose the wires, not the connection. The TRUCAST wireless interactive presentation system connects multiple devices to your **TRU**TOUCH.

Show and compare your students' answers instantly by projecting up to four different devices onto your interactive screen at once.

TRUCAST wirelessly connects like a router, bringing your classroom non-proprietary connectivity that is easy and secure for your network.



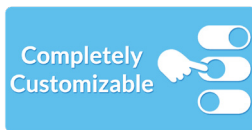
Open-Pluggable Specification (OPS) Computer

Each **TRU**TOUCH display comes with an OPS slot, allowing you to attach an OPS computer.



No more worrying about cables or going through the steps of connecting a laptop or desktop directly to the **TRU**TOUCH display. Having an OPS on-board computer plugged directly into your display makes it easier than ever to use a computer in class.

Newline also sells the OPS units to give your displays the full power of a desktop or laptop computer.



Mobile Stands



Give your displays the freedom from being always stuck on the wall.

Adjustable mobile stands allow you to better position your **TRU**TOUCH display on a unit that can be wheeled in and out of a classroom.

Adjustable designs let you put your display at the height and tilt options that fit best for your classroom. Adjust the height so that your students can still touch and interact directly with the screen, no matter how small.



Software Solutions

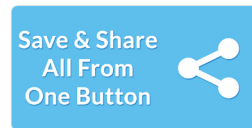
ideaMax

What sets IdeaMax apart from the rest is simple - it's easy to use!

Between using familiar icons you know and its intuitive design, IdeaMax saves you time in class.

Upload photos and videos right into your IdeaMax slides. Easily annotate over anything on the screen, and quickly save, export, or email your lesson out when you are done.

Experience lessons that flow seamlessly and easily, all from a platform independent software. No training necessary.



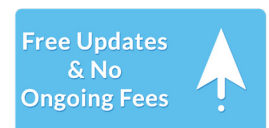
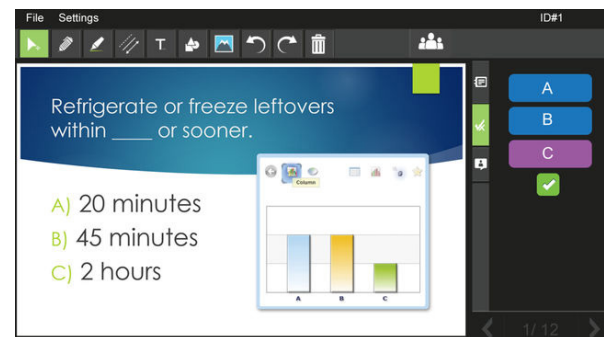
Qwizdom OKTOPUS

Oktopus is the perfect solution for 1:1 programs, flipped and blended learning classrooms.

Create live, collaborative lessons using 70+ subject-specific teaching tools, polling questions, and group collaboration over a Local Area Network (LAN).

Oktopus is available in over 42 languages with multi-touch and pen support, making it great for any classroom, anywhere.

Extend learning beyond the classroom by providing lessons and assessments for students to access at any time.



THE BEST PART?



Service, Warranty & Training

Newline's commitment to quality and your school's success extends past the initial purchase. We provide:



On-Demand Technical Support

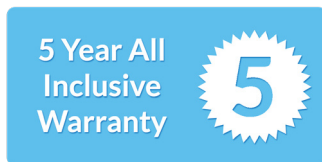
Should a question or issues arise from educators or technical staff, Newline provides you with multiple ways to get further assistance.

Newline provides continuous U.S. based technical phone support, email support through our Helpdesk Ticket System, and remote desktop support.

You will always have an answer at your fingertips by using our online support knowledgebase. Be in control of finding the answer to any question, any time, with our completely comprehensive self-help system.

- Phone Support
- Email Support
- Remote Desktop Support
- In the Field Technicians
- Online Knowledgebase
- Instructional Articles
- How To Videos
- Technical Specifications

Advanced Replacement Warranty



Training Geared for Ease of Use

One of the most important factors in achieving student success is having teachers who are knowledgeable and comfortable with technology, and know how to make the most out of their display.

Newline provides quality instructional training opportunities for all teachers to meet the needs of a growing and changing student population. The easier it is for teachers to use effectively, the more your students can succeed.

- Teacher Training & Support
- Customized Training Emails
- In-Class Visual Aids
- Online Certification Process
- Setup Instructions
- Training Videos



Model Specifications

Specification	RS Series	VN Series	X Series
Available Screen Sizes	65", 75", 86", 98"	65", 75", 86"	55", 65", 70", 75", 86"
Resolution	3840x2160	3840x2160	1920x1080/3840x2160
Brightness	370 nit	370 nit	370 nit
Contrast	4000:1	4000:1	4000:1
Viewing Angle	178°	178°	178°
Lifetime	50,000 hours	50,000 hours	50,000 hours
Speaker Position	Forward	Forward	Forward
Speaker Output	(2) 15W	(2) 15W	(2) 15W
Cameras	n/a	n/a	(2) 1080p cameras
Microphone	n/a	n/a	4-element array
Power Consumption	Max <450W; Standby <0.5W	Max <450W; Standby <0.5W	Max <450W; Standby <0.5W
Working Voltage	AC 100-240 V, 50/60Hz	AC 100-240 V, 50/60Hz	AC 100-240 V, 50/60Hz
Touch Surface	Anti-glare tempered glass	Optically bonded glass	Optically bonded glass
Writing Tools	Pen or Finger	Pen or Finger	Pen or Finger
Touch Points	20 Points	20 Points	20 Points
Touch Interface	USB	USB	USB
Weight Range	99.2 lbs - 286.6 lbs	86 lbs - 143.4 lbs	79.4 lbs - 174.1 lbs
Mounting	Wall mounts/mobile stand	Wall mounts/mobile stand	Wall mounts/mobile stand
Android Version	5.0.1	5.0.1	4.3, 5.0.1
Built-In Whiteboard	Yes	Yes	Yes
On-Screen Annotation	Yes	Yes	Yes
Swappable OPS?	Yes	Yes	Yes
OS Supported	Window, Apple, Chrome	Window, Apple, Chrome	Window, Apple, Chrome
Wireless Casting	Yes	Yes	Yes
Object Recognition	Yes	Yes	Yes

Awards and Recognition

2015



Entrepreneur of the Year Finalists



Infocomm Hot 50 Product



CBS EYE on Technology

2016



Best New Interactive Flat Panel - ISE 2016



InfoComm16 Best in Show



Entrepreneur of the Year Finalists



Best Technology Product



Top Fast Tech Company



AV Awards 2016 Finalist

2017



InfoComm17 Best in Show



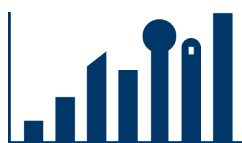
Entrepreneur of the Year Finalists



AV Awards 2017 Finalist



Fast Tech Top 5



DALLAS 100™

#10 of the Dallas 100



Ranked #149 in 2017 Inc. 500

2018



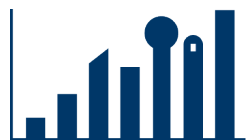
AV Awards 2018 Finalist



Fast Tech Top 5



Ranked #293 in 2018 Inc. 500



DALLAS 100™

#6 of the Dallas 100



Ranked #87 of the Deloitte Fast 500

From Our Customers



Kenneth Daigre
Port Arthur Independent
School District

"The teachers went bananas when they saw the TRUTOUCH in use. We're so excited to have this level of technology for our classes because they never thought we'd be able to afford it."



Jacquelyn Cumby
Dallas Independent School
District

"I've evaluated numerous displays over a long period of time. Our reasons for selecting Newline are that the displays are easy to use and they're easy to train how to use. The biggest benefit of working with Newline is their service and warranty... Their warranty service exceeds all others."



Kelley Watson
MacArthur High School
Entrepreneurship Program

"Using the TRUTOUCH system allows the students to show their work on a larger surface, annotate anything that they need to make changes on, and it involves a group setting."



Cynthia Herndon
Roman Catholic Diocese
of Dallas

"Newline's products are engaging our students in classrooms across the Diocese and our teachers love them for their ease-of-use. Besides their outstanding products, we also value the level of technical support and on-site training that Newline provides to us whenever we need it. Thank you Newline!"



Jennie Fitzgerald
Jose "Joe" May Elementary
School

"Every single thing we do is up there on the big screen. From learning, interactive videos, or interactive activities that you can use, to putting anything under the projector part and writing on the TRUTOUCH. I have taught for 23 years and I've never had an interactive touch screen like this, so this is amazing"



Thuy Nguyen
Dr. Emmett J. Conrad Global
Collegiate Academy

"I use TRUTOUCH 99% of the time... The only time I don't use it is when I'm giving a test."



Steve Doughty
Eisenhower Middle School

"I have been absolutely blown away by the quality and features of the product! Adding the TRUTOUCH system capabilities to our classroom has made a lasting, permanent and positive impact on the educational experience at our school!"



Tim Salm
St. Joseph's College

"In a generation that has grown up with the iPhone and touchscreen technologies, the TRUTOUCH interactive touchscreen makes sense to students and they respond positively (and intuitively) to it."



Mark Baratta
University of Washington

"People here have found the X7 to be very easy to use, so easy that they often do not need assistance from local technical support. This, of course, means that those of us doing technical support like the X7 a lot!"

Other Great Schools We've Worked With



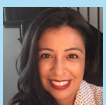
Matthew Hight
Jose "Joe" May Elementary
School

"We can use [the Android system] so the kids can write and work out problems on the whiteboard."



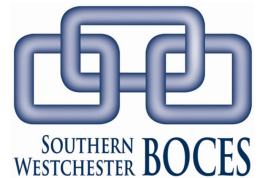
David Flynn
Macon County School
System

"We chose the TRUTOUCH from Newline after trying out a couple options. All our classrooms have SMARTboards but as the older ones were needing replacing, it was clear it was time to move to another device. As a G Suite district and invested in Chromebooks, the TRUTOUCH was a clear winning choice. The Chrome compatibility, advanced features, and their support have made this a real winner for the classrooms in our district."



Karina Garcia
St Bernard of Clairvaux
Catholic School

"Our TRUTOUCHs are very easy to use and that means more teachers and students are really using them! We are so pleased that we have these tools in our classrooms!"



Contact Us

Newline Interactive

101 East Park Blvd, Suite 807

Plano, TX 75074

1-888-233-0868

 facebook.com/newlineinteractive

 twitter.com/NewlineIDEAMAX

 linkedin.com/company/newline-interactive

To learn more, visit: usa.newline-interactive.com

