



P O L I C E & S H E R I F F

PUBLIC SAFETY

The Howard Story

The evolution of the Howard Advantage

The Howard Advantage starts with being an actual manufacturer by trade, and not simply an integrator of parts. Howard Industries, our parent company, was founded in 1968 by Billy Howard, Sr. Over the past four decades, this company has grown to become the nation's leading manufacturer of distribution transformers, with nearly 9 million transformers in service throughout the United States and abroad.

Howard's firmly established position as a leader of industry served as the springboard for a new division, which began production of computer technology in 1998, Howard Technology Solutions (HTS).

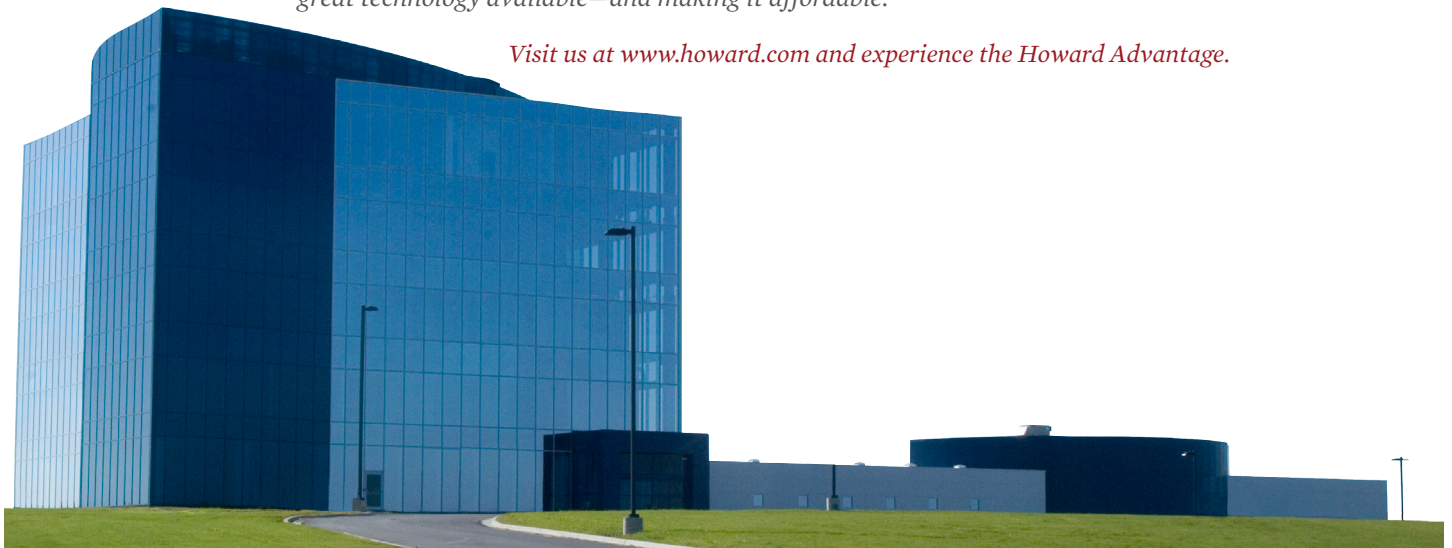
Howard (HTS) designs and manufactures its own desktops, notebooks, and servers, as well as a variety of enterprise mobility solutions. In

addition, strategic partnerships with other industry leaders enable us to offer a rich portfolio of over 250,000 name brand products. We have dedicated representatives for each of the products we have listed, who are equipped with the knowledge and expertise to answer questions and assist in the buying process. From purchase and delivery to installation, management, and servicing by industry-certified technicians, Howard is with you every step of the way.

We provide **government agencies** and **schools** with innovative and affordable technology. We help **medical** facilities maximize productivity and improve patient care, and we support **first responders in emergency situations** by facilitating communication among diverse systems and organizations. From single components for individual **consumers** to large-scale solutions for **commercial businesses**, we supply superior technology.

Howard's reputation for outstanding customer service sets us apart and inspires customer loyalty. We are committed to making great technology available—and making it affordable.

Visit us at www.howard.com and experience the Howard Advantage.



Howard Corporate Headquarters

Howard Industries' corporate headquarters and computer and medical cart manufacturing facilities are nestled within the 504-acre Howard Technology Park.

Building highlights:

- 60,000 sq ft of office space
- 72,000 sq ft of manufacturing space
- 3,200 sq ft bridge way connecting offices to manufacturing facility



Power Solutions



Howard Power Solutions, originally known as Howard Industries, was founded in 1968 by Billy W. Howard, Sr. Over the past four decades, this company has grown to be the nation's leading manufacturer of distribution transformers, with over 7 million transformers in service throughout the United States and abroad. Located in Laurel, MS, this facility has 2 million square feet, making it the largest transformer plant in the world. Our newest transformer division, Howard Substation Transformers, located near corporate headquarters, began manufacturing operations in April 2005 producing power transformers with higher KVA and voltage ratings.

Technology Solutions



Our new Corporate Headquarters is also home to our technology division, Howard Technology Solutions, and its medical division, Howard Medical. These 2 divisions bring to market cutting-edge, high-quality technology and medical equipment. Whether selling Howard-manufactured products such as desktops, notebooks, servers, and medical carts or partnering with other industry-leading companies to provide over 190,000 products, one can be sure when you buy from Howard, the needed equipment is available at affordable prices.

Lighting Products



Howard Lighting Products markets a vast portfolio including electronic and magnetic fluorescent ballasts, magnetic HID ballasts, as well as fluorescent lamps, T5/T8 fluorescent lamps, and halogen lamps. This division continually updates their product lines to meet the ever-changing demands of the market. They currently have products in use at Johnson Space Center, Kennedy Space Center, Camp Pendleton, CIA Headquarters, Fort Bragg, and numerous other U.S. government installations, as well as many, many private facilities.

Transportation



Howard Transportation, a wholly-owned subsidiary of Howard Industries, Inc., operates a full-load, long-haul, flat-bed common carrier truck line and brokerage firm that transports commodities and industrial goods throughout the continental United States. Initially started to transport Howard Power Solutions' raw materials and finished products, this division today consists of over 200 trucks with regional terminal facilities also located in West Virginia and North Carolina.

Products

Power Solutions



Technology Solutions



Medical Solutions



Lighting Solutions



Contacts

Howard Power Solutions
P.O. Box 1588, Laurel, MS 39441-1588;
Phone: 601.425.3151 Fax: 601.649.8090

Howard Lighting Products
Email: Lighting@Howard-Ind.com
P.O. Box 1590, Laurel, MS 39441;
Phone: 601.422.0033; Fax: 601.422.1652
Customer Service: 800.956.3456

Howard Technology Solutions
36 Howard Drive, Ellisville, MS 39441;
Phone: 888.912.3151 Fax: 601.399.5060
Technical support: 888.323.3151

Howard Transportation, Inc.
Email: Transportation@Howard-Ind.com
P.O. Box 586 Laurel MS 39441
Phone: (800) 447-7798

HOWARD™



DID YOU KNOW? HOWARD TECHNOLOGY SOLUTIONS IS CERTIFIED!

Specialized knowledge of industry technologies and standards, proven capabilities, and a strong commitment to customer service enable Howard technicians to achieve and maintain high-level, technical certifications with our partners.

We hold certifications for the following brands and services:

Extreme Networks

- ECSP - Extreme Certified Sales Professional
- ECDP - Extreme Certified Design Professional
- ENA - Extreme Network Associate
- ENS - Extreme Network Specialist

Crestron

- Crestron Digital Media Certification DMC-T
- Crestron Digital Media Certification DMC-D
- Crestron Digital Media Certification DMC-E
- Crestron Certified Programmer

InfoComm

- InfoComm Certified Technology Specialist (CTS)
- Infocomm Design Prep Level 1
- Infocomm Design Prep Level 2
- Infocomm Design Prep Level 3

FrontRow

- Front Row Campus Certification
- Campus Composer

Extron

- Extron Audio Video Associate (EAVA)
- Extron Control Associate

Polycom

- Polycom Infrastructure Solutions
- Polycom Video Solutions Technical Training
- Polycom Real Presence Immersive
- Polycom Real Presence Platform
- Polycom Real Presence Environments

HP

- Enterprise Server and Storage - HP2-D13

State Certifications

- Alabama General Contractor's License #48395
- Louisiana General Contractor's License #57836
- Mississippi General Contractor's License #19937-SC
- Tennessee General Contractor's License #67207
- Arkansas General Contractor's License #38781
- *Coming Soon: General Contractor's License for GA, FL, NC, and TX*

Aerohive

- Aerohive Essential WLAN Configuration

Allot

- Allot Certified Technical Engineer

Cisco

- Cisco Certified Network Professional
- Cisco Certified Network Associate
- Cisco Certified Network Associate - Voice
- Cisco Certified Design Associate
- Cisco Sales Expert
- Foundation Express Field Specialist
- Foundation Express Design Specialist
- Cisco Certified Entry Networking Technician

CompTia

- Security+
- STRATA
- A+
- Network+

Enterasys

- Certified Specialist - Wireless

Brocade

- Brocade Certified Network Professional
- Brocade Certified Network Associate

Microsoft

- Microsoft Certified Systems Administrator
- Microsoft Certified Professional
- Microsoft Certified Solutions Expert

VMware

- IVC
- VMware Certified Associate
- VMware Certified Professional
- VMware Technical Sales Professional

Xirrus

- Xirrus Certified Wireless Professional
- Xirrus Certified Wireless Technician



FOR SALES INFORMATION CONTACT

Lindsay Robinson
Louisiana Territory
lrobinson@howard.com
(601) 606-5508

HOWARD™

SHOP ONLINE NOW!

www.howardcomputers.com

Experience the Howard Advantage



2014 Line Card

REGION: Lindsay Robinson
REPRESENTATIVE: Louisiana Territory
EMAIL: lrobinson@howard.com
PHONE: (601) 606-5508

The one stop shop for all technology needs.

C.1 | NETWORKING INFRASTRUCTURE SOLUTIONS

1. ***VOIP:** Cisco, Zultys, & Vertical
2. **CONTINUITY SOLUTIONS:** Cisco
3. ***NETWORK INFRASTRUCTURE:** Brocade, Cisco, HP, Enterasys, & Extreme Networks
4. ***WIRELESS:** Xirrus, Enterasys, Cisco, Aerohive, Extreme, HP, Meraki, AirTight, Aruba, & Ubiquity
5. **MOBILE DEVICE MANAGEMENT:** AirWatch
6. ***COOLING, POWER PROTECTION & LAN STORAGE PRODUCTS:** Tripp Lite & APC
7. **BACKUP SOLUTIONS:** CommVault, Bakbone, Exagrid, Spectra Logic, VMware, HP, & Cybernetics
8. ***SERVERS:** Howard, Lenovo, Fujitsu, HP, & IBM
9. **STORAGE SOLUTIONS:** Xiotech, Buffalo, & Compellent
10. **EMAIL ARCHIVING SOLUTIONS:** Barracuda & Arcmail
11. ***SECURITY SOLUTIONS:** Symantec, McAfee, Fortinet, Astaro, Sophos, & Barracuda
12. **DISASTER RECOVERY PRODUCTS:** EMC2, VMware, & Howard
13. **BANDWIDTH MANAGEMENT SOLUTIONS:** Allot
14. **NETWORK SECURITY:** Palo Alto, Lightspeed, & iboss
15. **NETWORK ACCESS CONTROL:** Impulse Point

C.2 | NETWORK VIDEO SOLUTIONS

1. **PHYSICAL SECURITY**
2. **VIDEO SURVEILLANCE:** Milestone, Cisco, & Axis
3. ***VIDEO STREAMING:** Vbrick
4. ***VIDEO CONFERENCING:** Polycom, Lifesize, & AVer
5. **DIGITAL SIGNAGE:** Visix, Viewsonic, & LG

C.3 | VIRTUALIZATION

1. **DESKTOP VIRTUALIZATION:** VMware, NComputing, & Citrix
2. ***SERVER VIRTUALIZATION:** VMware & Citrix

A | COMPUTING SOLUTIONS

1. **DESKTOPS:** Howard, Dell, Lenovo, HP, & NComputing Multi-user Technologies
2. **NOTEBOOKS, NETBOOKS, & TABLETS:** Howard, Dell, Lenovo, HP, Fujitsu, Toshiba, Acer, Asus, & Samsung
3. **MANAGEMENT SOLUTIONS:** Altiris, Kaspersky, & Faronics
4. **ANTIVIRUS:** Symantec, McAfee, Sophos, & Kaspersky
5. **MOBILE PRESENTATION / CHARGING CARTS:** Howard, Datamation, Spectrum, Earthwalk, Bretford, Avermedia, & Balt

B | AUDIO VISUAL & INSTRUCTIONAL SOLUTIONS

1. **INTERACTIVE CLASSROOM SOLUTIONS:** BenQ, Epson, & Mimio: Interactive Projectors
2. **WIRELESS INTERACTIVE PADS:** Mimio
3. **PROJECTORS & BULBS:** Epson, Casio, BenQ, Viewsonic, InFocus, Sanyo, Toshiba, Panasonic, Christie, & Hitachi
4. **PROJECTOR SCREENS:** Da-Lite & Draper
5. **DOCUMENT CAMERAS:** AverMedia, Elmo, Lumens, Mimio, Qomo, & Samsung
6. **PERSONAL RESPONSE SYSTEMS:** Mimio
7. **AUDIO SOLUTIONS:** Howard, Frontrow, Panasonic, & Califone
8. ***CONTROL SYSTEMS:** SP Controls, Extron, FrontRow, & Crestron
9. **MOUNTS:** Chief, C2G, & Premier Mounts
10. **CABLES:** Cables To Go, & Comprehensive
11. **FURNITURE:** Spectrum Industries, Middle Atlantic, & VFI
12. **INSTALLATION & DESIGN SERVICES:** Howard

Experience the Howard Advantage



2014 Line Card

D | SOFTWARE

1. **MICROSOFT:** WinServer 2012, Exchange 2013, SQL 2012, Office 2013
2. **ANTIVIRUS:** Kaspersky, Sophos, Trend, Symantec
3. **AUTODESK:** AutoCad, Inventor, Electrical, AUD
4. **BACKUP SOFTWARE:** Symantec, CA
5. **CLOUD:** Microsoft Office 365, Hosted Mail, Storage VDI
6. **MOBILE DEVICE MANAGEMENT:** Kaspersky, Sophos, Airwatch
7. **ADOBE:** Acrobat, Creative Suite 6
8. **MANAGEMENT:** DyKnow

E | INSTALLATION & INTEGRATION SERVICES

1. ***MANAGED SERVICES:** Network Consulting
2. ***INSTALLATION SERVICES:** Audio Visual & Computing, Video Conferencing, plus Wireless Access, Network and Data Center, & Cabling
3. **ONSITE TECHNICIANS / IT OUTSOURCING**
4. **PROGRAMMING SERVICES:** Control Systems & Video Conferencing
5. **SUPPORT SERVICES:** OnCall, HTTP, Technology Management, & Custom Imaging
6. **PHYSICAL SECURITY & VIDEO SURVEILLANCE SERVICES:** Milestone, Axis, & Cisco
7. **CONSULTING:** Wireless Surveys, Network Assessments, & Outsourced Labor

F | MOBILE OFFICE

1. **RUGGED NOTEBOOKS:** Panasonic
2. **ASSOCIATED HARDWARE:** Howard
3. **MOUNTS:** Chief, Havis, Gamber Johnson, RAM
4. **SOFTWARE:** Microsoft, Adobe
5. **PRINTERS:** Brother, OKI, & HP
6. **SCANNERS (BAR):** Honeywell
7. **LONGHAUL WIRELESS:** Howard
8. **VEHICLE TRACKING:** Howard AVL
9. **VEHICLE SOLUTION:** Howard Eliminator

Blain Bech (LA)
bbech@howard.com - 225-205-0224

Pete Baumann (IL, IN, IA)
pbaumann@howard.com - 224-301-7131

Stacey Saulpaw (MS)
ssaulpaw@howard.com - 601-580-2010

David Murphy (MI)
dmurphy@howard.com - 248-212-6783

Larry Durbin (OK, TX)
ldurbin@howard.com - 817-757-6777

Jim Flack (GA)
jflack@howard.com - 770-545-0027



Law Enforcement Total Solution

Easy eCitations



Implementing electronic ticketing solutions increase public safety by maximizing resources.



Scanning a driver's license

We have the total solutions to make eCitations easy.

Handwriting traffic citations and other violations is extremely time consuming. Automating processes with technology solutions allows personnel to focus on their number one priority, public safety. Advantages of automating the citation process include:

- **Speed! Issue citations in 1/4 of the time**
- **Eliminate manual data entry errors**
- **Increase revenue (fewer illegible tickets)**
- **Quick return on investment (ROI)**
- **Improve officer safety**
- **Gain time to focus on public safety**
- **DUI**



BARCODE READER

CODE READER™ 1000

The Code Reader™ 1000 (CR1000) is a compact, cabled barcode reader that takes up limited workspace without compromising barcode reading performance. The patented dual field optical platform of the CR1000 allows users to quickly scan both wide 1D barcodes and small dense 2D barcodes.

Featuring high speed, omnidirectional barcode reading, extremely low power consumption and manual or automatic triggering, the CR1000 is the ideal barcode reader for high use environments and excels in reading mobile coupons, ticketing and kiosk applications.



AREA-IMAGING SCANNER

VUQUEST 3310g

Honeywell's Vuquest 3310g compact area-imaging scanner offers aggressive scanning of all 1D, PDF and 2D barcodes in a lightweight, durable and portable form factor. The 3310g hands-free scanner's sleek and elegant design also blends seamlessly in retail environments. With intelligent multi-interface design, this image scanner supports popular interfaces on a single device and features mobile phone reading technology to scan barcodes on mobile devices.



2D MAGSTRIPE READER

MODEL M260

The Model 260 incorporates a magnetic stripe reader with advanced technology 2D barcode reading capability. The Model 260 can read any government issued ID card with magnetic stripe information and/or 2D barcodes. This creates a single device for reading virtually all government issued ID's. The data is also transferred to the host device via a standard USB interface (or RS-232). This approach to scanning both magstripe and 2D information with one device is an ideal solution for the POS, ID authentication and law enforcement environment.

In addition to the standard side access USB cable interface connector, the Model 260 has incorporated a bottom mounted interface connector, making it an ideal solution for kiosk application environments.



MOBILE PRINTER

PJ662 POCKETJET 6 WITH BLUETOOTH

The Brother PocketJet 6 mobile printers, with 200 dpi resolution, provide a high-quality output while helping to lower the cost of mobile printing. The PocketJet 6 comes with integrated USB 2.0 and IrDA interfaces, and an optional Bluetooth technology interface is available. The "PocketJet 6" model, part number PJ622, is the standard model; the "PocketJet 6 with Bluetooth", part number PJ662, includes Bluetooth.

FOR SALES INFORMATION CONTACT:

Lindsay Robinson

Louisiana Territory

lrobinson@howard.com

(601) 606-5508

PROFESSIONAL SERVICES

See you On Site.



Count on us to implement and maintain all your business technology. We offer flat-rate pricing for any I.T. work you might need. Ask a representative for details.



CONTRACT PRICING

We have hourly and package rates. Call for details.



BUSINESS SERVICES:

- **WINDOWS SERVERS IN SELECT MARKETS**

Robust e-mail, contacts and calendars; central security and file management; routine backups

- **NETWORKING**

Shared internet access, secure wireless connectivity, shared files and printers.

- **REPAIR**

Virus removal, software troubleshooting, physical repairs, upgrades, tune-ups and more.

- **PREVENTATIVE**

Routine visits from our technicians keep your business running smoothly and minimize downtime.

PROFESSIONAL SERVICE ON SITE:

LET OUR ELITE FORCE OF TECHNICIANS PROVIDE PROFESSIONAL SUPPORT AT A FRACTION OF THE COST TO EMPLOY FULL-TIME I.T. STAFF.

- Professional I.T. support for your business
- Typical arrival in 1-2 business days
- Available for emergency service. Prices vary.
- Can be used for multiple locations
- Direct contact with servicing technicians and corporate business guidance

Rep Contact Information

Lindsay Robinson

Louisiana Territory

lrobinson@howard.com

(601) 606-5508

We will keep your technology up and running while you run your business. Call (888) 912-3151.

HOWARD
TECHNOLOGY SOLUTIONS

HTPP

Howard Technical Partnership Program

Fast, Flexible, and Free

Howard Technology Solutions realizes that many organizations handle basic hardware service and support in one of two ways: they either make a significant investment in establishing and maintaining a group of local service providers, or they use their own internal support staff. For this reason, we have developed the Howard Technical Partnership Program (HTPP) so we can satisfy either option by facilitating timely, cost-effective, quality service in conjunction with our high standards for customer satisfaction.

Managed by our 100% US-based support engineers and technicians, HTPP is an integral part of our strategy to establish direct, personal relationships with our customers to ensure we meet all of their organizations' needs. Participation is easy; simply complete an HTPP application online at www.howardcomputers.com/support.

"Howard's Technical Partnership Program is an integral part of our strategy to establish direct, personal relationships with our customers to ensure we meet all of their organizations' needs."



Program Highlights

- No subscription fee or certification requirements
- Labor reimbursement for authorized repairs
- Expedited service and/or replacement part ordering
- Free consultation to determine your optimal parts inventory with on-site parts inventory available to qualifying organizations
- You NEVER pay for defective parts and shipping is FREE!

Howard System and Technology Advancement Updates

Receive frequent updates highlighting our new technologies; system improvements; and information on the latest Howard desktops, notebooks, servers, and much more.

HAVIS INTEGRATED CONTROL SYSTEM



The future of mobile office interiors

by: **HAVIS**

Electronix



CROWN
NORTH AMERICA

INTEGRATED CONTROL SYSTEM:

What is the Havis Integrated Control System?



Ford Police Interceptor Sedan



Ford Police Interceptor Utility

The Integrated Control System is a space saving design that creates an efficient and safe work environment through the use of a highly integrated and customizable control system.

The Los Angeles Police Department in cooperation with Ford Motor Company, Havis, Inc. and Lectronix developed a bright in-dash touch screen display that provides police officers with a seamless easy to use interface for their equipment.

Vehicle Integration: The Integrated Control System is designed to fit the Ford Police Interceptor Utility and Ford Police Interceptor Sedan dash without permanent modification.

Safety: By relocating computers and video sources to the trunk, the Integrated Control System allows for a flush profile of the OEM dash and a clean cockpit while ensuring OEM safety systems are unobstructed.

Ergonomics: The placement and orientation of the Touch Screen Display has been approved by the Los Angeles Police Department, one of the largest police forces in the country with over 10,000 officers.

Display Visibility and Durability: The ultra-wide viewing angle of the Touch Screen Display gives the driver or passenger full control of the system. The chemically strengthened glass face is also sunlight readable.

THE NEXT STEP IN MOBILE OFFICE INTERIORS

How the Havis Integrated Control System Works



The Touch Screen Display's flexibly connects to all equipment, even external equipment mounted safely in the trunk.

Vehicle Cabin | Vehicle Trunk



The Embedded Processor connects to Ford wiring and replaces the OEM AM/FM Radio Module. A sophisticated audio management system prioritizes the use of the vehicle's audio system so important communications are not missed (including the car speakers and hands-free microphone).

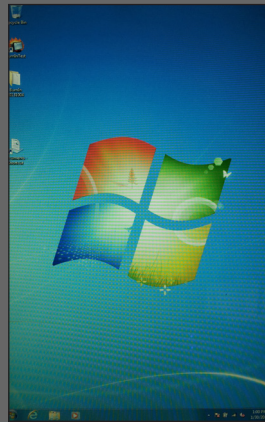


PC, Laptop, or Tablet
The A/V Extender allows connectivity to your on-board computer.



Easily expand your system with Radar, License Plate Readers and a DVR.

Standard Display Modes

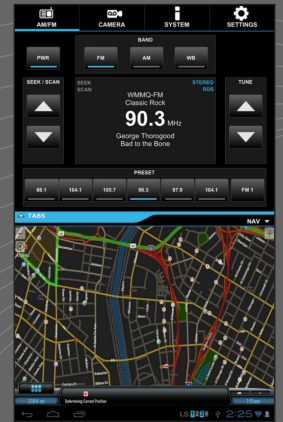


Video Display 1: Driven by the Embedded Processor, the Touch Screen Display provides control for functions such as AM/FM Radio, camera, systems, and settings.

Video Display 2: Driven by the A/V Extender, allowing for video input from a remote PC, Laptop or Tablet that connects to the Touch Screen Display.

Use one touch MODE button to easily alternate between the two displays

Integration of Optional Equipment



Optional Integration: With software and hardware options, the Integrated Control System can support a DVR, Radar, License Plate Reader, and other Customer Applications.

GPS and WiFi Option: GPS integrates turn-by-turn navigation into your Primary Video Display. WiFi connectivity allows the Embedded Processor to connect to WiFi hot spots, enabling 3rd party applications access to the internet.



Base System Components

- Touch Screen Display
- HVAC Controls
- A/V Extender
- Embedded Processor

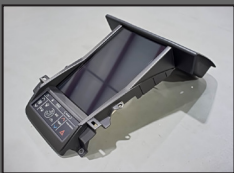
Optional Features

- WiFi
- Bluetooth
- GPS
- DVR
- Radar

NOTE: Optional features are available and customizable depending on end user requirements

Component Details

Touch Screen Display



- 12.1" ultra-durable portrait display
- Multi-touch operation (pinch & swipe)
- Optimized screen allows for use with wet hands and/or gloves
- Power and video from a single cable from Embedded Processor

Resolution	800 x 1280
Brightness	1200 NIT Daylight Readable
Viewing Angle	88° from all angles
Environmental	-20°C to +70°C

A/V Extender



- Ability to remotely connect an external audio/video source to the Touch Screen Display such as PC, laptop, or tablet
- Connects VGA or HDMI, micro-USB*, and Analog Audio to Embedded Processor with a single shielded CAT6A cable, which is designed for an automotive environment

Inputs from PC	VGA, HDMI, micro-USB*, Audio
Power Connection	No separate power required
Environmental	-40°C to + 85°C

* micro-USB only allows for the input of External Keyboard, Mouse, and touchscreen feedback

HVAC Controls



- Replaces factory HVAC (climate) controls, hazards and airbag indication
- Optimal cockpit placement and compatible with OEM factory wiring
- Use one touch MODE button to easily alternate between the two displays
- Convenient Buttons for control of Touch Screen Display: volume, display brightness and blackout

Touch Technology	Cap-Sense touch pad controls
Buttons	16 controls with LED back-lighting and status indication
Environmental	-40°C to + 85°C

Embedded Processor



- Mounts in place of OEM AM/FM radio module
- Controls AM/FM Radio, A/V Extender and optional GPS/WiFi
- Steering wheel control functionality is highly customizable to provide "one push" operation of critical functions

I/O	CAN, USB, RS232, Ethernet, Discrete, A/V
Amplifier	4 x 20W speakers
Radio	AM/FM/WB tuner
Application Framework	Android 4.1
Environmental	-40°C to +85°C
OPTIONS	GPS, WiFi, Bluetooth



Universal Mounting Solutions

UT-101
Standard Laptops



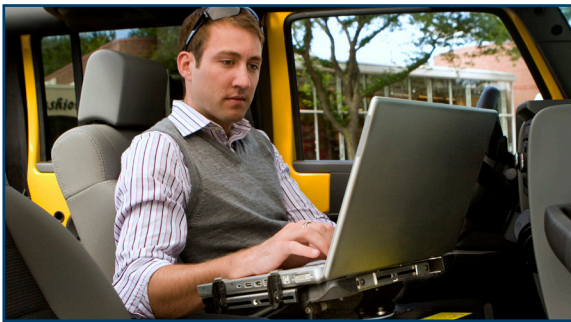
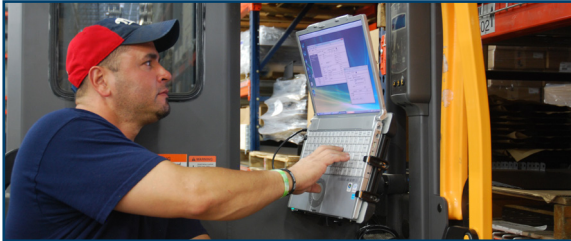
UT-102
Small Laptops

UT-201
10" Tablets



Havis Rugged Universal Mounts

Universal Laptop Mounts



The Havis series of Universal Laptop Mounts represents the next generation of ruggedized mounts for any laptop that does not have the need for port replication. With a new lightweight design featuring composite materials and a lightweight and strong aluminum structure, the Universal Laptop Mount provides the most flexible and durable universal tray available for mobile computing applications. The Universal Laptop Mount, in conjunction with Havis supplied mounts and motion accessories, continue the tradition of Havis designing the most ergonomically correct and safe solution for your equipment, while minimizing the risk of injury and maximizing productivity. This combination of comfort, quality and safety in a truly universal device are what make the Havis Universal Laptop Mount the clear choice.

- Engineered with lightweight aluminum and composite materials to maximize strength while minimizing weight.
- Includes two sets of Hold-Down Lugs to maximize compatible laptops
- Attractive footprint and design provide for improved ergonomics in universal tray application.
- Easy to use latch mechanism
- Barrel lock provides security and theft-deterrence
- Easily configured by the user for the best ergonomic fit with most laptop computers and manufacturers.

UT-101

Specifications

Width: 13.2 - 15.1" (33.3 - 38.3 cm)

Depth: 11.2 - 12.2" (28.4 - 30.9 cm)

Height: 2.2 - 2.5" (5.5 - 6.4 cm)

Weight: 4.2 lbs (1.9 kg)



Compatible Computer Dimensions (Part # UT-101)

Width: 11.43 - 14.23" (29.03 - 36.15 cm)

Depth: 9.27 - 11.02" (23.55 - 27.99 cm)

Height: 0.66 - 1.86" (1.7 - 4.7 cm)

Standard Lugs: 0.66 - 1.26" (1.7 - 3.2 cm)

Tall Lugs: 1.26 - 1.86" (3.2 - 4.7 cm)

Laptop Compatibility

The UT-101 is compatible with most of the laptops currently on the market, including Panasonic, DELL, Lenovo, IBM, Hewlett-Packard and Toshiba.

UT-102

Specifications

Width: 13.2 - 14.5" (33.5 - 36.8 cm)

Depth: 11.2 - 12.2" (28.4 - 30.9 cm)

Height: 2.5" - 2.8" (6.3 - 7.0 cm)

Weight: 4.2 lbs (1.9 kg)



Compatible Computer Dimensions (Part # UT-102)

Width: 9.55 - 11.34" (24.25 - 28.80 cm)

Depth: 7.67 - 9.42" (19.48 - 23.92 cm)

Height: 0.63 - 1.50" (1.60 - 3.81 cm)

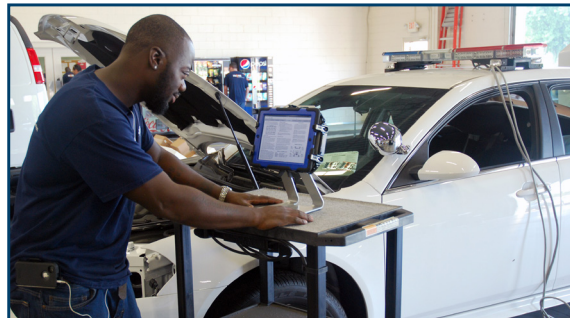
Laptop Compatibility

The UT-102 is compatible with laptops featuring a smaller footprint, including Panasonic T Series, Panasonic W Series, Panasonic CF-19, and HP 2703P notebook computers.

for Laptops and Tablets

Universal Tablet Mount

Havis' Universal Tablet Mount was designed for compatibility with numerous tablet brands. Engineered with lightweight aluminum and composite materials, the UT-201 mount maximizes strength and minimizes weight. Combined with your choice of a variety of Havis mount and motion accessories, the new Universal Tablet Mount can be used comfortably in your home, work, or mobile office. The combination of comfort, safety and quality in a truly universal device is what makes the Havis Universal Tablet Mount the clear choice.



Universal Tablet Mount is shown with a Havis Desktop Stand (optional accessory, Part #: DS-DA-218)

Tablet Compatibility

The UT-201 is compatible with most 10-inch tablets from a wide variety of manufacturers, including:

- Acer
- Apple
- Asus
- Dell
- Hewlett-Packard
- Lenovo
- Microsoft
- Motorola
- Panasonic
- Samsung
- Toshiba

Tablet cases and skins will fit but should first be confirmed with the Compatible Tablet Dimensions.

UT-201

Specifications

Width: 10.4" (26.4 cm)

Depth: 8.4" (21.3 cm)

Height: 2.3" (5.8 cm)

Weight: 2.6 lbs (1.2 kg)



Compatible Tablet Dimensions (Part # UT-201)

Width: 9.30 - 11.24" (23.6 - 28.5 cm)

Depth: 6.83 - 8.13" (17.3 - 20.7 cm)

Height: 0.55 - 0.93" (1.4 - 2.4 cm)

RuggedJet™

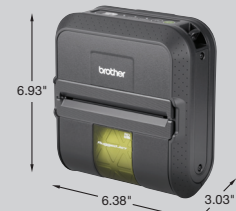
Mobile Printers

RECEIPT & LABEL
MOBILE PRINTING SOLUTIONS



RuggedJet™ RJ-4030
RuggedJet™ RJ-4040

*Fast...Tough...Does More...
Compared to competitive mobile printers, the Brother™ RuggedJet™ 4" mobile printers offer fast print speeds for higher productivity, they're built tough to meet the needs of mobile professionals, and they provide a better total cost of ownership than non-ruggedized mobile printers. The RuggedJet™ printer is also versatile – easily printing a wide range of receipts AND labels from 2 to 4 inches wide, and also includes a strong set of drivers and control languages, all to meet the demands of a variety of vertical market applications.*



About 1.87 lbs. (850 g.)
RuggedJet™ mobile printer

RuggedJet™ Series
Data Sheet

brother®
at your side

Technical Specifications		
	RJ-4030	RJ-4040
Printing Technology	Direct Thermal	
Print Resolution	203 dpi	
Maximum Printing Speed	5 ips	
Dimensions (W x H x D)	6.38" x 6.93" x 3.03" (162 mm x 176 mm x 77 mm)	
Weight with Battery	1.87 lbs. (850 g.)	
User Interface	Three buttons, Four LEDs	
Memory	RAM:32MB / Flash:16MB	
Print Width – Max	4.09" (104 mm)	
Roll Width – Max/Min	4.64" (118 mm) / 2.0" (51 mm)	
Maximum Roll Diameter	2.28" (58 mm)	
Brother Genuine Media	Receipts: Non-coated, Top-coated; Weatherproof / Labels: Top-coated	
Sealing Certification	IP54	
Drop Protection	1.8m (6ft.) (Under Brother™ standard environment)	
Barcodes	Linear: CODE 39, Intlv 2 of 5, EAN-8, EAN-13, UPC-A, UPC-E, UPC and EAN 2 or 5 digit extensions, CODABAR, CODE 128, GS1-128 (UCC/EAN 128), Postnet, GS1 Databar (RSS14, RSS14 Stacked, RSS14 Truncation, RSS14 Stacked Omnidirection), GS1 Databar (RSS Limited), GS1 Databar (RSS Expanded, RSS Expanded Stacked) 2-Dimensional: QR Code (model 1, model 2, micro QR), Maxi code, PDF417 (Standard, Truncate), MicroPDF417, Data Matrix (Square, Rectangular)	
OS Support	Drivers: Windows® XP, Windows Vista®, Windows® 7 (RJ-4030/4040); Windows® Server 2003, 2008, 2008R2 (RJ-4040 only) SDKs: Windows® CE 5.0 & higher, Windows® Mobile 5.0 & higher, Android™ 2.2 & higher; iOS® 4.3 or later (RJ-4040 only) PDF printing: SDKs for Windows® Mobile 5.0 & higher, and Android™ 2.2 & higher; iOS® 4.3 or later (RJ-4040 only)	
Printer Languages	BPL (P-touch® Template 2.0), ESC/P, Raster	
Emulations	ZPL II®	
Software/Utilities	P-touch® Editor 5.0, P-touch® Transfer Manager 2.1, BRAdmin Light, BRAdmin Pro, Network setting tool	
Interface	USB, Serial (RS-232C), Bluetooth (Ver. 2.0+EDR, Class2)	USB, Serial (RS-232C), Wi-Fi (IEEE 802.11 b/g/n)
WLAN Security	No	WEP (64 /128), TKIP, AES, WPA-PSK, WPA2-PSK, EAP-FAST, EAP-LEAP
Resident Fonts	14 BMP & 3 Outline fonts	
Battery Life	500 charge cycles (50% battery capacity assurance)	
Charging Time	6 Hours	
Power Options	Rechargeable Li-ion Battery, AC Adapter, DC Vehicle Adapter	
Options/Accessories*	Rechargeable Li-ion Battery, Shoulder Strap, Protective Case, Vehicle Mount, 4-Bay Battery Charger, DC Vehicle Adapter, AC Adapter, Serial Cable, Magnetic Card Reader	
Warranty	2-year "bumper-to-bumper" warranty▼	

* Requires additional purchase. ▼ See limited warranty for details. For warranty information, ask your Brother Mobile Solutions, Inc. sales representative or visit www.brothermobilesolutions.com. RuggedJet™ Specifications subject to change without notice.

ASK US ABOUT OUR ACCESSORIES*

Premium Brother Papers for the RuggedJet Line

RuggedJet™ models accept a variety of premium Brother™ thermal media

Receipt Paper (4" wide)

- Standard Receipt Paper
- Premium Receipt Paper
- Weatherproof Receipt Paper



Label Rolls (Die-cut media)

- 4" x 1" Labels
- 4" x 2" Labels
- 4" x 3" Labels
- 4" x 4" Labels
- 4" x 6" Labels



BROTHER MOBILE SOLUTIONS, INC.

**For more information, call 1-800-543-6144,
or visit www.brothermobilesolutions.com**

brother
at your side

Brother™ and RuggedJet™ are trademarks or registered trademarks of Brother Industries, Ltd. in the United States. Microsoft®, Windows® and Windows Vista® are either registered trademarks or trademarks of Microsoft Corporation in the United States and/or other countries. Android is a trademark of Google Inc. Use of this trademark is a subject to Google permission. ZPL II is a registered trademark of ZIH Corp. All other trademarks and registered trademarks are the properties of their respective companies.

© 2012 Brother Mobile Solutions, Inc., 100 Technology Drive, Suite 250A, Broomfield, CO 80021

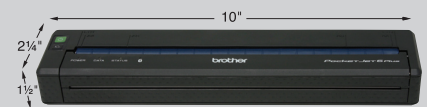
BMS 01-2012 002

PocketJet®

Mobile Printers

FULL-PAGE MOBILE
PRINTING SOLUTIONS

PocketJet® 6 mobile printers connect easily to laptops and handhelds to quickly produce full-page documents with high-resolution text, graphics and pictures practically anywhere. These lightweight, compact devices help mobile professionals in public safety, pest management, insurance, public utilities, and other service organizations print the detailed full-page diagrams, maps and other documents they need, wherever they are.



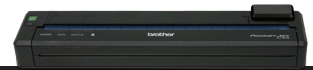
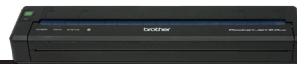
About 1.3 lbs
PocketJet® 6 Plus mobile printer



PocketJet® 6
PocketJet® 6 Plus
PocketJet® 673

PocketJet® 6 Series
Data Sheet

brother®
at your side



Technical Specifications			
	PocketJet® 6	PocketJet® 6 Plus	PocketJet® 673
Maximum Paper Width	8.5"		
Maximum Printing Speed	6 ppm (pages per minute)		
Printing Method	Direct Thermal Technology		
Printer Resolution	203 x 200 dpi	300 x 300 dpi	
Media (Direct Thermal)	Cut sheet, Continuous Roll, Perforated Roll, Fanfold		
Media Sizes	Letter, Legal, A4, Continuous; Custom sizes and pre-printed media are available upon request.		
Interfaces	USB 2.0 and IrDA standard; Bluetooth® wireless technology optional*		WLAN (Ad hoc Mode 802.11b/g) [□]
WLAN Security	NA	NA	WEP (64/128 bit)
External Dimensions	10.04" L x 2.17" W x 1.18" H		10.04" L x 2.17" W x 1.53" H
Power Options*	NiMH Battery; Li-ion Battery; AC Adapter; DC Vehicle Adapter		
Battery Yield: NiMH	Up to 70 pages (from 100% charge)		
Battery Yield: Li-ion	Up to 300 pages (from 100% charge)		
Operating Systems Supported	Windows® XP / Windows Vista® / Windows®7 / Windows®8; Mac® OS 10.4/10.5/10.6; Windows Mobile; Android™; BlackBerry OS		iOS® 4.3 or later* [■] ; Windows® XP / Windows Vista® / Windows®7 / Windows®8

* Requires additional purchase. All specifications subject to change without notice.
[□] Apple® AirPrint™ not supported.

[■] Requires Brother iOS SDK for app to install on the iOS device.

ACCESSORIES*

Premium Brother™ Papers for the PocketJet® Line

PocketJet® models accept a variety of premium Brother™ thermal media

- Cut-sheet letter or legal-size paper
- Continuous or perforated roll paper
- Fanfold paper
- Premium archival paper - lasts 20 years or more
- Standard archival paper - lasts 7 years or more
- Synthetic Weatherproof media - withstands outdoor elements
- Custom preprinted paper available



ASK US ABOUT OUR OTHER PRODUCTS

RuggedJet™ mobile printers

Receipt & Label Mobile Printers

RuggedJet™ RJ-4030

- Up to 5 ips, at industry-standard 203 dpi resolution
- IP54 certification to withstand dust and moisture
- 6 ft. drop protection
- Prints labels and receipts from 2" to 4" wide from convenient drop-in rolls
- Resident fonts
- USB 2.0, Serial and Bluetooth® technology interfaces
- Optional magnetic card reader available*



RuggedJet™ RJ-4040

All the features of the RuggedJet™ RJ-4030, but with:

- USB 2.0, Serial and Wi-Fi (802.11b/g/n) interfaces



MPrint Mobile Printers

Ultra-portable, small-format mobile printers

MW-260

- Prints on Brother® A6 paper (5.8" X 4.1")
- Weighs 1.2 lbs.
- USB, IrDA, and Bluetooth® technology interfaces
- 300 dpi resolution for crisp text and graphics
- Windows®, Windows Mobile, and BlackBerry® support



MW-145BT

- Prints on Brother® A7 paper (4.1" X 2.9")
- Weighs 11 oz.
- USB, IrDA, and Bluetooth® technology interfaces
- 300 dpi resolution for crisp text and graphics



BROTHER MOBILE SOLUTIONS, INC.

For more information, call 1-800-543-6144,
or visit www.brothermobilesolutions.com

Brother™ and PocketJet® are trademarks or registered trademarks of Brother Industries, Ltd. in the United States. Microsoft®, Windows® and Windows Vista® are either registered trademarks or trademarks of Microsoft Corporation in the United States and/or other countries. Android is a trademark of Google Inc. Use of this trademark is a subject to Google permission. All other trademarks and registered trademarks are the properties of their respective companies.

© 2013 Brother Mobile Solutions, Inc., 100 Technology Drive, Suite 250A, Broomfield, CO 80021

brother
at your side

BMS 01-2013 001 V1

CODE READER™ 1000



Compact, efficient and powerful, this is advanced technology at a maximum value.

Weighing in at just 2.4 oz, capable of withstanding multiple drops from 6 feet and able to work at 131° F, the simple and intuitive CR1000 could be the toughest featherweight you'll ever meet. It quickly and reliably decodes 1D, 2D and Postal barcodes from any surface type. Featuring Code's Affinity® rapid disconnect cable set, you can count on durable connectivity between reader and host device, with the ability to quickly remove and replace damaged cables. For data editing and parsing, end users can leverage its JavaScript platform to create custom routines and applications that are easily embedded into the reader.

Advanced data management and excellent versatility.

In retail applications, the CR1000 excels in and can be combined with various peripherals for a truly unique point-of-sale solution. From mobile devices like workstations-on-wheels, tablet PCs or environmentally conscious kiosk operators, the CR1000 works on a large scale in a limited workspace.

For intuitive, lightning fast performance that won't drain your battery or your budget, choose the CR1000.

Features & Benefits

- High speed, omnidirectional reading of 1D, 2D and Postal barcodes
- Manual or automatic triggering
- Bright LED indicator and loud, programmable tone indicator
- Reads barcodes on mobile devices
- Compatible with Code's CortexTools™ software configuration utility
- Data editing and parsing with JavaScript
- Uses Code's rapid disconnect Affinity® cables
- Extremely efficient power consumption (lowest in its class)
- Optional stand
- Disinfectant-ready IP54 housing
- Available in light and dark gray

Applications

Healthcare, mobile coupon and ticketing, pharmacy, patrol vehicles, ATMs and kiosks, retail, and manufacturing

Features at a glance



CODE READER™ 1000 SPECIFICATIONS

Physical Characteristics

CR1000 Dimensions	1.7" H x 2.6" L x 2.2" W (30 mm H x 67 mm L x 52 mm W)
CR1000 Weight	2.4 oz (68 g)
Color Options	Available in light or dark gray
IP Rating	54

User Environment

Operating Temperature	-20° to 55° C / -4° to 131° F
Storage Temperature	-30° to 65° C / -22° to 150° F
Humidity	5% to 95% non-condensing
Decode Capability	<p>1D: Codabar, Code 11, Code 32, Code 39, Code 93, Code 128, IATA 2 of 5, Interleaved 2 of 5, GS1 DataBar (RSS), Hong Kong 2 of 5, Matrix 2 of 5, MSI Plessey, NEC 2 of 5, Pharmacode, Plessey, Straight 2 of 5, Telepen, Trioptic, UPC/EAN/JAN</p> <p>Stacked 1D: Codablock F, MicroPDF, PDF417, GS1 Composite (CC-A/CC-B/CC-C)</p> <p>2D: Aztec Code, Data Matrix, Han Xin, MaxiCode, Micro QR, QR Code</p> <p>Proprietary 2D: GoCode® (Additional License Required)</p> <p>Postal Codes: Australian Post, Intelligent Mail, Japan Post, KIX Code, Korea Post, Planet, Postnet, UK Royal Mail, UPU ID-tags</p>
Image Output Options	Formats: JPEG or PGM
Field Selection	High Density or Wide Field
Data Editing	JavaScript (Additional License Required)

Working Ranges

CR1000 Performance

Test Barcode	Min Inches (mm)	Max Inches (mm)
3 mil Code 39	3.1" (80 mm)	4.0" (102 mm)
7.5 mil Code 39	1.3" (33 mm)	7.2" (182 mm)
10.5 mil GS1 DataBar	0.8" (20 mm)	8.7" (220 mm)
13 mil UPC	1.1" (28 mm)	11.0" (280 mm)
5 mil DM	1.7" (43 mm)	4.5" (115 mm)
6.3 mil DM	1.3" (33 mm)	5.9" (150 mm)
10 mil DM	0.8" (20 mm)	7.1" (180 mm)
20.8 mil DM	1.1" (28 mm)	13.5" (343 mm)

Note: Working ranges are a combination of both the wide and high density fields. All samples were high quality barcodes and were read along a physical center line at a 10° angle. Default AGC settings were used. Accuracy= +/- 10%.

Performance Characteristics

Field of View	High Density Field: 30° horizontal by 20° vertical Wide Field: 50° horizontal by 33.5° vertical
Focal Point	High Density Field: approximately 100 mm Wide Field: approximately 115 mm
Sensor	CMOS 1.2 Megapixel (1280 x 960) gray scale
Optical Resolution	High Density Field: 960 x 640 Wide Field: 960 x 640
Pitch	± 60° (from front to back)
Skew	± 60° from plane parallel to symbol (side-to-side)
Rotational Tolerance	± 180°
Print Contrast	25% (1D symbologies) or 35% (2D symbologies) absolute dark/light reflectance differential, measured at 650 nm
Target Beam	Single, blue targeting bar
Ambient Light Immunity	Sunlight: Up to 9,000ft-candles/96,890 lux
Shock	Withstands multiple drops of 6' (1.8 Meters to concrete)
Power Requirements	Reader @ 5vdc (mA): Typical = less than 450 mA; Idle = less than 80 mA; Sleep = less than 31 mA
Memory Capacity	128MB Flash ROM, 32MB RAM
Communication Interfaces	RS232, USB 2.0 (Generic HID, HID Keyboard, Virtual Com Port)
Warranty	2 year standard warranty; extended service plan available

Accessories

- Various Cable Options Available. Visit www.codecorp.com/cables.php for a list of compatible cables
- Universal Stand



code
ADVANCED BARCODE READERS

Phone: +1-801-495-2200
Web: www.codecorp.com

CODE READER™ 2300



Features & Benefits

- Lightweight, ergonomic palm style reader
- Durable, quick-release rechargeable battery cartridges
- Battery status LED indicators with fuel gauge
- User feedback with audible tones and LED
- High speed, omnidirectional reading of 1D and 2D barcodes
- Reads barcodes on cell phone screens
- Multiple programmable buttons for customized workflow processes
- Easy to clean, IP43 housing
- Paging button to assist in locating reader (Charging Station with embedded CodeXML® modem option only)
- CortexRM™ remote management ready
- Powerful data management capability with JavaScript



CR2300 with charging station.

Keep things moving in the right direction.

Time is of the essence when it comes to customer satisfaction. The Code Reader™ 2300 (CR2300) is a reliable, Bluetooth barcode reader designed for use in retail applications—from inventory tracking and age verification to e-forms and mobile coupons and ticketing. Its ease of use and rapid data transmission allow it to securely handle anything that comes its way.

The CR2300 is an ideal match with other Bluetooth-enabled devices powered by iOS, Android and Windows operating systems. The versatile interface between reader and mobile device is seamless, and requires no need for modified or additional software. The CR2300 is also equipped with a robust imaging decode engine that generates omni-directional barcode reading and high-speed data output. Features like these equate to fewer delays and shorter lines at check-out counters—both of which are key factors in garnering positive customer relations.

Simple solutions in the palm of your hand.

For added versatility the CR2300 features two programmable buttons for customized workflow applications, driver license parsing capability, and is remote management ready. The CR2300 is a highly customizable barcode reader geared towards retailers looking for a practical way to simplify both new and existing workflow processes.

Applications

Retail, mobile POS, manufacturing, warehouse, scanning highly reflective barcodes

Features at a glance



*RS232 is only available as CodeXML® M3 Modem Communication Interface Option

CODE READER™ 2300 SPECIFICATIONS

Physical Characteristics

Palm Reader Dimensions	1.1" H x 5.1" L x 2.0" W (28mm H x 130mm L x 51mm W)
Charging Station Dimensions	2.4" H x 4.5" L x 3.3" W (60mm H x 115mm L x 83mm W)
Palm Reader Weight	4.5 oz (128 g)
Battery Weight	1.7 oz (48 g)
Charging Station with Embedded Modem Weight	5.4 oz (153 g)
Charging Station without Embedded Modem Weight	4.9 oz (139 g)

User Environment

Operating Temperature	-20° to 55° C / -4° to 131° F
Storage Temperature	-30° to 65° C / -22° to 150° F
Humidity	5% to 95% non-condensing
Decode Capability	1D: Codabar, Code 11, Code 32, Code 39, Code 93, Code 128, Interleaved 2 of 5, GS1 DataBar (RSS), Maxtrix 2 of 5, MSI Plessey, Plessey, Straight 2 of 5, Trioptic, UPC/EAN/JAN Stacked 1D: GS1 Composite (CC-A/CC-B/CC-C), MicroPDF, PDF417 2D: Aztec Code, Data Matrix, Micro QR Code, QR Code, Han Xin Proprietary 2D: GoCode® (Additional License Required)
Image Output Options	Formats: JPEG or PGM
Field Selection	Wide Field
Data Editing	JavaScript (Additional License Required) / CodeXML® Rules

Working Ranges

CR2300 Performance

Test Code	Min Inches (mm)	Max Inches (mm)
4 mil Code 39	1.6" (40 mm)	3.1" (78 mm)
7.5 mil Code 39	1.3" (34 mm)	7.2" (182 mm)
9.5 mil Code 128	0.6" (15 mm)	8.3" (212 mm)
10.5 mil UPC	0.8" (20 mm)	9.0" (228 mm)
13 mil UPC	1.1" (28 mm)	11.0" (280 mm)
4.2 mil DM*	1.9" (48 mm)	2.6" (66 mm)
5 mil DM*	1.7" (43 mm)	3.0" (76 mm)
6.3 mil DM*	1.3" (33 mm)	4.1" (104 mm)
10 mil DM*	0.8" (20 mm)	6.5" (165 mm)
20.8 mil DM*	1.1" (28 mm)	13.5" (343 mm)

Note: All samples were high quality codes and were read along a physical center line at a 10° angle. Default AGC settings were used. Accuracy= +/- 10%.

Performance Characteristics

Field of View	Wide Field: 50° horizontal by 33.5° vertical
Focal Point	Approximately 100 mm
Sensor	CMOS gray scale
Optical Resolution	Wide Field: 960 x 640
Pitch	± 60° (from front to back)
Skew	± 60° from plane parallel to symbol (side-to-side)
Rotational Tolerance	± 180°
Print Contrast Res.	25% (1D symbologies) or 35% (2D symbologies) absolute dark/light reflectance differential, measured at 650 nm
Target Beam	Single, blue targeting bar
Ambient Light Immunity	Sunlight: Up to 9,000ft-candles/96,890 lux
Shock	Withstands multiple drops of 6' (1.8 Meters) to concrete
Power Requirements	Reader @ 4.2vdc (mA): Typical and Peak = 362 mA; Idle = 80 mA; Sleep = 20 mA Charging Station with Embedded CodeXML® Modem @ 5vdc (mA): USB max charge rate = 555 mA USB trickle charge rate = 165 mA Charging Station with External CodeXML® M3 Modem @ 5vdc (mA): USB max charge rate = 514 mA USB trickle charge rate = 125 mA
Number of Scans	Up to 50,000 scans per charge
Memory Capacity	128MB Flash ROM, 32MB RAM
Bluetooth Modem	RS232, USB.2.0 (Generic HID, HID Keyboard, Virtual COM Port)
Communication Interfaces	Bluetooth (Class II)
Operational Modes	
Warranty	1 Year

Accessories

- Lithium-Ion Battery
- USB Charging Cable, US, Europe/South America, UK Power Supplies
- Charging Station
- Mini-USB (charging station with embedded CodeXML® Modem), USB and RS232 Cables (via External CodeXML® M3 Modem)
- Charging Station with Embedded CodeXML® Modem
- USB and RS232 Cables (via External CodeXML® M3 Modem)
- CodeXML® M3 Modem (external)
- Software Development Kits
- CodeXML® Router Software



code
ADVANCED BARCODE READERS

Phone: (801) 495-2200
Web: www.codecorp.com

CODE READER™ 4405



Features & Benefits

- Lightweight design combines easy-to reach buttons with an unobstructed view of iPhone screen
- Bright, rectangular, blue LED aiming quickly and easily targets and reads all bar codes
- Multiple locking clips hold phone in place, protecting it against damage and minimizing exposure to debris
- Software Development Kit (SDK) assists in creating a custom scanner application
- Single and quad-bay charging station options

Cost-effectively and quickly convert your iPhone® 5 into a mobile bar code reading solution.

Consolidating technologies into one, user-friendly device has perhaps never been more in demand among mobile-driven applications, and the CR4405 sled is leading the way.

Ideal for fast-paced environments such as healthcare and retail, its sleek, ergonomic design features advanced imaging technology for increased productivity and mobile workflow efficiency.

Designed to protect your investment.

The CR4405 iPhone® 5 bar code reading sled is the only one that features replaceable, rechargeable battery cartridges. This makes changing depleted batteries quick and easy, and avoiding workflow interruptions even easier. Its durable, IP54-rated housing withstands harsh environments, and consists of disinfectant ready plastics that stand up to frequent cleaning with rigorous chemicals. The CR4405 delivers superior performance on all 1D, 2D and stacked bar code symbologies, and it includes a software development kit to tailor scanner applications.

For speed, efficiency and versatility, the CR4405 sled for iPhone 5 steps up as the ultimate solution to multiple challenges.



Applications

Healthcare, retail, government, event management

Features at a glance



*Screen and keypad are available via iPhone 5.

CODE READER™ 4405 SPECIFICATIONS

Physical Characteristics

CR4405 Dimensions	6.25" L x 2.8" W x 1.25" D (156 mm L x 75 mm W x 30 mm D)
CR4405 Weight (with battery and phone)	12.0 oz (300.0g)
Charging Station Dimensions	4.6" L x 4.5" W x 2.7" H (117 mm L x 114 mm W x 69 mm H)
Charging Station Weight	5.3 oz (150.0g)

User Environment

Operating Temperature	-20° to 55° C / -4° to 131° F
Storage Temperature	-30° to 65° C / -22° to 150° F
Humidity	5% to 95% non-condensing
Decode Capability	1D: Codabar, Code 11, Code 32, Code 39, Code 93, Code 128, Interleaved 2 of 5, GS1 DataBar (RSS), Hong Kong 2 of 5, Maxtrix 2 of 5, MSI Plessey, Pharmacode, Plessey, Straight 2 of 5, Telepen, Trioptic, UPC/EAN/JAN Stacked 1D: GS1 Composite (CC-A/CC-B/CC-C), MicroPDF, PDF417 2D: Aztec Code, Data Matrix, Micro QR Code, QR Code, Han Xin Proprietary 2D: GoCode® (Additional License Required) Postal Codes: Australian Post, Intelligent Mail, Japan Post, KIX Code, PLANET, POSTNET, UK Royal Mail
Image Output Options	Formats: JPEG or PGM
Field Selection	High Density or Wide Field
Time Stamp	Interval Logging
Data Editing	JavaScript (Additional License Required) / CodeXML® Rules

Working Ranges

CR4405 Performance		
Test Code	Min Inches (mm)	Max Inches (mm)
3 mil Code 39	3.1" (80 mm)	4.0" (102 mm)
7.5 mil Code 39	1.3" (33 mm)	7.2" (182 mm)
10.5 mil GS1 DataBar	0.8" (20 mm)	8.7" (220 mm)
13 mil UPC	1.1" (28 mm)	11.0" (280 mm)
4.2 mil DM	1.9" (48 mm)	4.3" (110 mm)
5 mil DM	1.7" (43 mm)	4.5" (115 mm)
6.3 mil DM	1.3" (33 mm)	5.9" (150 mm)
10 mil DM	0.8" (20 mm)	7.1" (180 mm)
20.8 mil DM	1.1" (28 mm)	13.5" (343 mm)

Note: Working ranges are a combination of both the wide and high density fields. All samples were high quality codes and were read along a physical center line at a 10° angle. Default AGC settings were used. Accuracy= +/- 10%.

Performance Characteristics

Field of View	High Density Field: 30° horizontal by 20° vertical Wide Field: 50° horizontal by 33.5° vertical
Focal Point	Approximately 100 mm
Sensor	CMOS 1.2 Megapixel (1280 x 960) gray scale
Optical Resolution	High Density Field: 960 x 640 Wide Field: 960 x 640
Pitch	± 60° (from front to back)
Skew	± 60° from plane parallel to symbol (side-to-side)
Rotational Tolerance	± 180°
Print Contrast Res.	25% (1D symbologies) or 35% (2D symbologies) absolute dark/light reflectance differential, measured at 650 nm
Target Beam	Single, blue targeting bar
Ambient Light Immunity	Sunlight: Up to 9,000ft-candles/96,890 lux
Shock	Without phone withstands multiple drops of 6' (1.8 Meters) to concrete With phone withstands multiple drops of 4' (1.22 meters) to concrete
Memory Capacity	128MB Flash ROM, 32MB RAM
Communication Interfaces	USB, Wireless Interfaces Supported by iPhone 5
Operational Modes	iPhone App Mode, iPhone Keyboard Mode
Warranty	1 Year; extended service plan available

Accessories

- Lithium-Ion Battery
- Single and quad-bay charging stations



code
ADVANCED BAR CODE READERS

Phone: (801) 495-2200
Web: www.codecorp.com

End Wireless Challenges, Get the Most from Mobile Investments

Don't Risk Your Mobile Deployment Success

Never before have enterprises, utilities and government agencies relied on mobile computing for so much of their field operations. Agile and responsive customer service requires an optimized mobile deployment but mobilizing a workforce has its challenges. Deployments of all sizes face common issues in user adoption, connectivity, device management, and network security to name a few.

Fortunately, there is a trusted, one-stop solution.

Enterprise Mobility Management (EMM) software from NetMotion Wireless gives you the connectivity, visibility and control needed to solve the many challenges of mobile computing.

Our software creates and sustains secure connections to mobile applications over any network, providing detailed visibility into the performance of public and private cellular networks, and is managed through a centralized control console. **The result is a more productive mobile workforce, greater resource efficiency, and tremendous cost savings.**

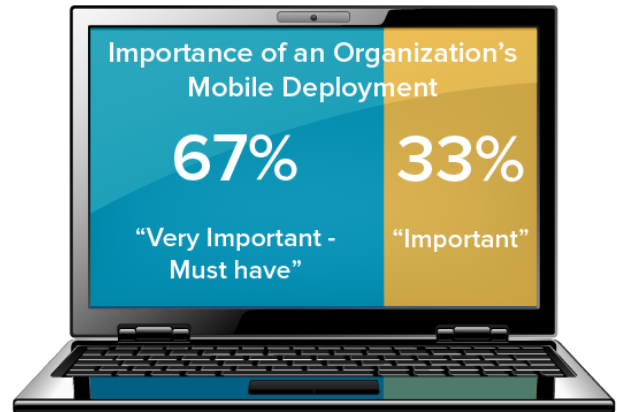
How it Works

With NetMotion Wireless' EMM software, your mobile workers need only sign-on once to maintain secure and persistent connectivity to your private networks. Our software provides a seamless user experience that keeps users focused on their job and not the technology.

While your workers are connected, detailed performance data from devices, users and networks is aggregated and fed into a centralized console, giving IT administrators a bird's eye view of your mobile deployment.

Our reporting module transforms this hard data into detailed reports including network and application usage, data consumption and individual device status. IT administrators can also create custom policies to manage applications, network access and bandwidth consumption.

This unparalleled ability to use hard data and visualize your mobile deployment helps administrators quickly identify issues in the field, bypass all the guesswork, and keep the mobile workers connected.



Source: 2011 Wireless Technologies in Field Service Organizations survey, NetMotion Wireless
Respondents were asked to rate the importance of their mobile deployment as 'very important - must have,' 'important,' 'helpful,' 'not important,' or 'other.'
All respondents ranked their mobile deployment as either very important or important.

Real Results



AT&T
1.8 times increase in daily field jobs performed and a 43% reduction in expenses



US Foods
\$800,000 saved on printed materials and distribution



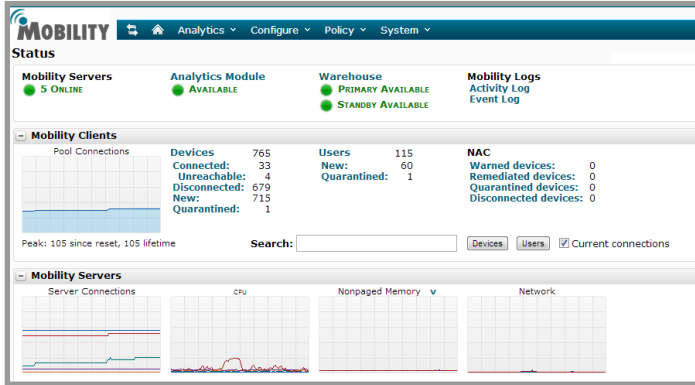
Allina Home Care
90% decrease in IT helpdesk tickets per month



Southern Maryland Electric Co.
98% continuous connectivity achieved

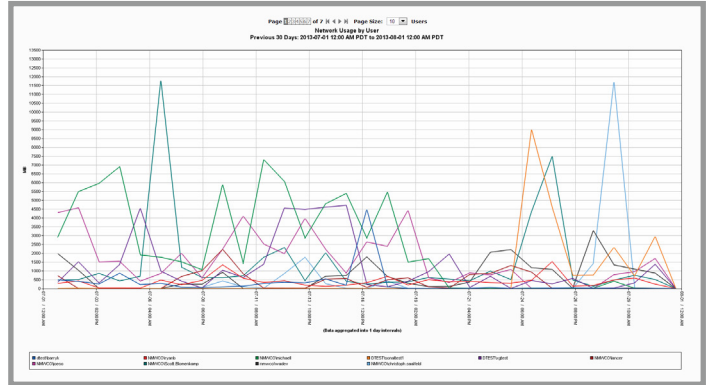
The Control You Need

Only NetMotion software provides the connectivity, visibility and control needed for successful mobile deployments.



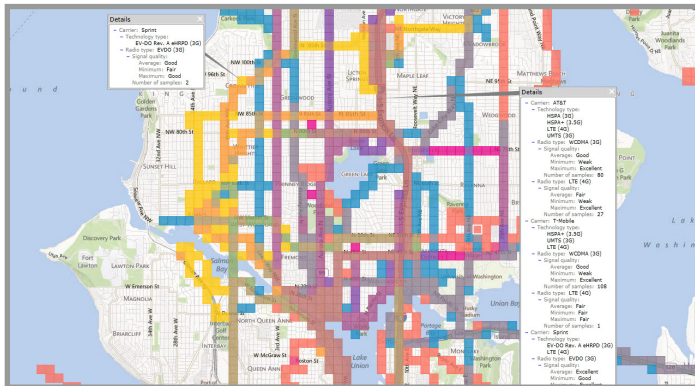
Complete Control of Mobile Devices

Use web acceleration, traffic shaping and best bandwidth selection to boost the performance of mission-critical applications and devices.



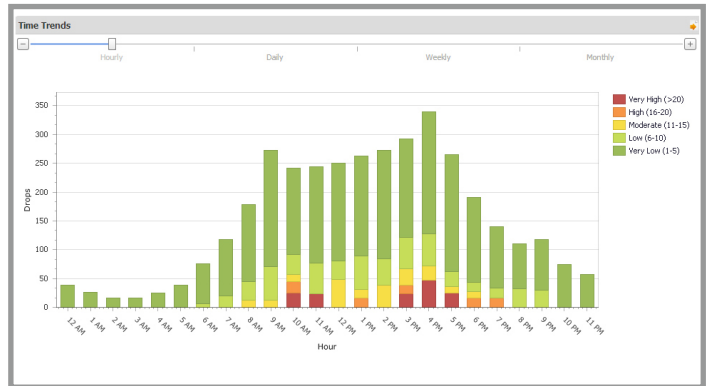
Analytics and Policy Management

Monitor connection status, application use and bandwidth consumption across multiple groups or even a single user. Generate policies to boost productivity and efficiency across all users.



Real World Cellular Coverage Data

Quickly troubleshoot connectivity issues by seeing exactly what your users experience in the field. Create deployment strategies based on hard data and not anecdotal information or carrier maps.



Detailed Reporting Module

Measure the performance of your mobile deployment by gathering valuable information on devices, network performance and application usage.

Learn More

To find out more about our Enterprise Mobility Management software simply contact your NetMotion Wireless representative. Or contact us at: **1-866-262-7626**, or online at: <http://www.NetMotionWireless.com>



For more information, please contact your Howard representative:

Lindsay Robinson

Louisiana Territory
lrobinson@howard.com
(601) 606-5508