

L120 Access Terminal

Key Features

- Enables sharing one host PC with up to 30 users*
- Connects to host PC via Ethernet over any distance
- Ensures absolute data security (no local USB ports)
- Includes terminal services software for Windows/Linux
- Extension protocol supports multi-media applications
- Slashes computing acquisition & support costs
- Easy to setup, maintain and secure
- Compact, reliable & energy efficient (no fans or disks)



Overview

The NComputing L120 enables you to dramatically cut computing costs by sharing the untapped power of existing PCs. The NComputing L120 access terminal, Ethernet extension protocol, and terminal services software work together to efficiently harness excess computing capacity and enable multiple users to share a single PC. Best of all, IT staff and end users do not need special training because this end-to-end solution is easy to manage and is compatible with standard PC applications.

System Configuration

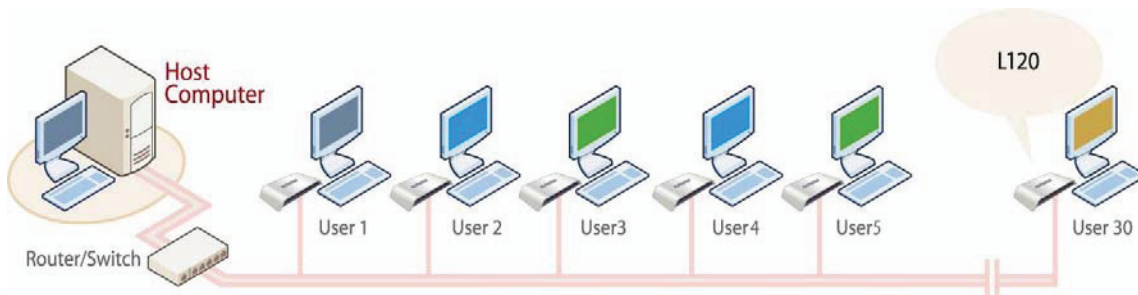
With the NComputing solution, each user still has a standard monitor, keyboard, mouse and speakers. However, instead of connecting directly to a PC, these peripherals connect to the L120 access terminal on their desk. The L120 has no local USB ports preventing users from connecting USB flash drives (if USB flash drive support is required refer to the NComputing L200).

The solid state L120 connects securely over standard Ethernet to the host PC using the high-performance NComputing User eXtension Protocol (UXP).

The NComputing terminal services software divides the PC's resources into independent sessions that give each user their own full PC experience. Up to ten users can be supported from one PC when running on a desktop operating system such as Microsoft Windows XP.

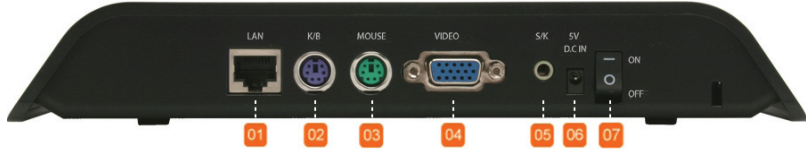
With a server operating system on the host (Linux or Microsoft Windows 2003 Server) up to 30 users* can be supported simultaneously. The NComputing terminal services software also works with the optional NControl and NShield software which add more centralized management capabilities such as remote monitoring and host PC data backup.

By delivering all the key components of this multi-user computing system, NComputing uniquely delivers a high performance solution at the lowest possible cost to you.



Connect up to 30 users* to a single host computer

L120 Access Terminal Specifications

HARDWARE	
Size	Width: 242 mm / 9.5 inches, Height: 40 mm / 1.6 inches, Depth: 133 mm / 5.2 inches
Weight	L120 Access Terminal: 320 g / 0.71 lbs Shipping Weight (includes power adapter, packaging, documentation, etc.): 1.4 kg / 3 lbs
Power Supply	Input: 100-250 VAC, 50-60 Hz Output: 5 VDC, 2 A Nominal consumption: 4 W
Front LED Indicators	Power: connection to power supply LAN: connection to network Ready: connection to host PC
Rear Ports	 <p>01 – RJ-45 LAN connection 02 – PS/2 Mouse Port 03 – PS/2 Keyboard Port 04 – VGA Monitor Port 05 – Speaker Jack 06 – DC Power Input 07 – On/Off Power Switch</p>
Connection to Host PC	Unlimited distance via 100 Mb/s switched Ethernet connection
Video Resolution	640x480, 800x600, 1024x768 and 1280x1024, 16-bit color maximum, 75 Hz maximum refresh rate
Audio	16-bit stereo output via speaker port
Data Security	No USB ports on terminal ensure absolute data security
Internal HW	All solid-state design, no moving parts, no fans, no local user storage NComputing System-on-Chip with 8 MB SDRAM and 512 KB flash Embedded NComputing operating firmware (no local user OS)
Reliability (MTBF)	420,894 hours (calculated using Bellcore Issue 6 TR-332, Case 2, Part I at 40° C)
HW Security	Kensington lock system, no on-board storage
Certifications	FCC Class B, CE, MIC, NOM, GOST-R, and RoHS compliant
TERMINAL SERVICES SOFTWARE	
Max # Users Per PC	30 users when using a server host OS (i.e. Windows Server 2003 or Linux) 10 users when using a desktop OS (i.e. Windows XP)
Extension Protocol	NComputing User eXtension Protocol (UXP)
Supported Operating Systems	Microsoft: Windows XP Professional and Media Center Edition 2005, Windows 2000 Professional Windows Server 2003, Small Business Server 2003 Linux: several variants (refer to Support section of Website for latest supported revisions of Linux)
Maintenance	Online remote update via NComputing Management Console (included)
SYSTEM REQUIREMENTS AND OPTIONS	
Host PC Configuration	1 Remote User: Pentium 4, >1.3 GHz, 512 MB RAM 2-3 Remote Users: Pentium 4 (HT), >2.4 GHz, 512 MB RAM 4-7 Remote Users: Pentium 4 (HT), >3.0 GHz, 1 GB RAM 8-10 Remote Users: Pentium 4 (HT), >3.2 GHz, 2 GB RAM *Note: the maximum number of users varies depending on the number of processor cores, the amount of memory, the type of hard drive on the host computer, the type of OS, and administrative privileges. To support more than 10 users from one computer, you must use Microsoft Server 2003 or Linux.
Kit Contents	L120 Kit includes access terminal, power supply/cord, terminal services software installation CD/license, Quick Install Guide, and 5 m (16 ft.) LAN cable. PC, keyboard, mouse, speakers and other peripherals are NOT included and must be purchased separately. Application software and OS licenses for the host PC and L200 may be required by the respective software vendor and must be purchased separately.
Optional Software	NControl (remote control and management), NShield (Hard Drive partition recovery)



© Copyright 2007. NComputing Inc. All rights reserved. Specifications are subject to change without notice. NComputing is a trademark of NComputing Inc. Microsoft and Windows are registered trademarks of Microsoft Corporation. Intel and Pentium are registered trademarks of Intel Corporation. Linux is a registered trademark of Linus Torvalds. Other trademarks and trade names are the property of their respective owners.

3.8.07