



**1 Push-to-talk all-call mic with pre-amp**

**2 Dedicated touch-screen PC running Conductor client**

Easy Windows-based GUI for creating communication zones, bell tones, schedules, and cascading emergency action scripts.

**Full school-year scheduling with customizable exceptions**

**Multi-user support**

**Efficient use of bandwidth**

An active Conductor audio-over-IP stream occupies less than 1% of the bandwidth on a typical 100 Mbps network. Accordingly, 10 simultaneous streams would take up about 3% of the bandwidth, and 100 such streams would only take up about 29%.

**Coordinated emergency response**

Set up scripts for audio alerts, email notifications, and media control for visual response displays. Receive alerts from classroom control panels or relay buttons.

**Auto-detect of highest priority audio source**

Reduces potential for audio conflict during classroom instruction.

**Remote administration from any networked browser**

**3 1RU server running Conductor and Maestro applications**

**4 Verification speakers**

**5 CM3000 amplifier/controller**



**SPECIFICATIONS**

**PUSH-TO-TALK MICROPHONE**

**Input power:** +12V (ITC port on CM-3000)

**Connector:** RJ45

**Microphone Modes:**

- PTT (push-to-talk)
- PTM (push-to-mute)
- On-Off toggle

**Sensitivity:** 5.6 Mv/Pa (millivolt/Pascal)

**Size (HxWxD):** 344 x 114 x 178mm/  
13.54 x 4.49 x 7.01in

**Weight:** Net 690g/24.34oz

**DRS5000 SERVER**

**OS:** Linux: Ubuntu Server 8.04 LTS

(I) Rack Unit

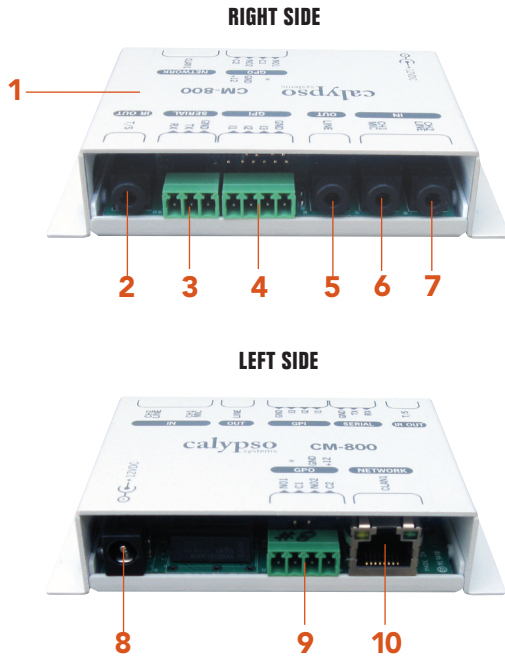
**CONDUCTOR**

**Bandwidth/stream:** <1% of a typical 100 Mbps network

**NETWORK REQUIREMENTS**

**Streaming Devices/Server:** 250, in single Class C range

**Subnet:** Primary (attached) server network port requires 255.255.255.0 Class C subnet regardless of the network architecture. No restrictions on secondary (non-attached) network port, except that it must not be part of the same network as the primary network port.



**SPECIFICATIONS**

**Network support:** 10/100Mb/s (auto sensing)  
**Serial Baud rate:** 2400 to 57600 baud  
**Power supply:** 9V 500mA  
**Size (WxHxD):** 9.8 x 6.4 x 2.3cm/3.84 x 2.5 x .913in  
**Weight:** 0.35kg/0.77lbs

**INPUTS/OUTPUTS**

- (1) input power jack
- (1) RJ45 network jack
- (1) 3.5mm unbalanced stereo audio input jack
- (1) 3.5mm mic input jack
- (1) 3.5mm amplifier balanced/unbalanced stereo/mono line output jack
- (2) captive screw general purpose output (GPO) relay terminals (4 position)
- (3) captive screw general purpose input (GPI) relay terminals (4 position)
- (1) 3.5mm infrared control output jack
- (1) captive screw RS232 serial control input/output terminal (3 position)

**1 Brings Conductor IP-based paging to 70V amps and speakers**

This audio decoder accepts streaming audio input and delivers line level audio output. Makes it easy to connect a Conductor™ IP-based paging platform to standard 70v amplifier/speaker infrastructure in common or outdoor areas.

**Converts your analog PA system to an IP-based streaming solution**

Mixes and samples line-level audio and plays it over the network.

**Puts even non-networked devices on the network**

Accepts network-based “pass through” commands — so FrontRow’s Encore™, Maestro™, and Conductor™ network software can control and help you manage devices that are not directly networkable.

**Easier configuration and update**

Onboard GUI software makes it easy to set IP address and adjust other settings. Remotely updatable as needed.

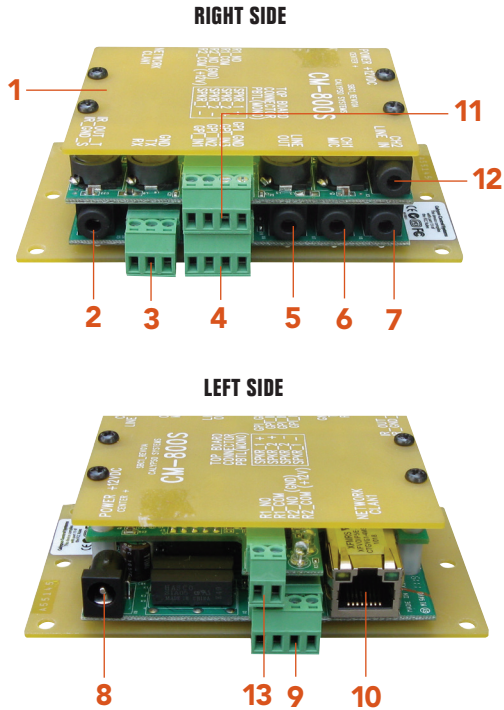
**Triggered actions**

You can program the CM800 to execute actions based on relay/GPI or streamed events.

**Secure**

Password-protected for network access.

- 2 IR control output**
- 3 Serial control input/output**
- 4 General purpose input (GPI) relay**
- 5 Amplifier line out**
- 6 Mic audio in**
- 7 Line audio in**
- 8 Power jack**
- 9 General purpose output (GPO) relay**
- 10 Network jack**



**1 Brings Conductor IP-based paging to small common areas and office spaces**

This audio decoder accepts 8kHz streaming audio input and drives up to four 8-ohm speakers, conveniently bringing IP paging to small common areas and shared office spaces.

**Converts your analog PA system to an IP-based streaming solution**

Mixes and samples line-level audio and plays it over the network.

**Easier configuration and update**

Onboard GUI software makes it easy to set IP address and adjust other settings. Remotely updatable as needed.

**Triggered actions**

You can program the CM800S to execute actions based on relay/GPI or streamed events — for example, shutting down all projectors at 8pm.

**Secure**

Keep out hackers by setting up passwords for network access.

**2 IR control output**

**3 Serial control input/output**

**4 General purpose input (GPI) relay**

**5 Amplifier line out**

**6 Mic audio in**

**7 Line audio in**

**8 Power jack**

**9 General purpose output (GPO) relay**

**10 Network jack**

**11 Simple speaker hookup**

Captive screw terminals make speaker connection quick and easy.

**12 Line audio out**

**13 Power adapter terminal**

**SPECIFICATIONS**

**Network support:** 10/100Mb/s (auto sensing)

**Serial Baud rate:** 2400 to 57600 baud

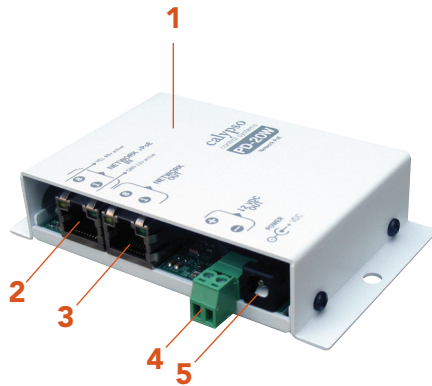
**Power supply:** 12VDC at 3.5A

**Size (WxHxD):** 9.8 x 6.4 x 3.1cm/3.84 x 2.5 x 1.2in

**Weight:** 0.35kg/0.77lbs

**INPUTS/OUTPUTS**

- (1) input power jack
- (1) RJ45 network jack
- (1) 3.5mm unbalanced stereo audio input jack
- (1) 3.5mm mic input jack
- (1) 3.5mm amplifier balanced/unbalanced stereo/mono line output jack
- (2) captive screw general purpose output (GPO) relay terminals (4 position)
- (3) captive screw general purpose input (GPI) relay terminals (4 position)
- (1) 3.5mm infrared control output jack
- (1) captive screw RS232 serial control input/output terminal (3 position)
- (1) captive screw loudspeaker terminal left and right, (mono output)
- (1) 3.5mm (audio output)
- (1) captive screw power adapter terminal



**SPECIFICATIONS**

**Network support:** 10/100Mb/s (auto sensing)

**Power supply:** 12VDC at 3.5A

**Size (WxHxD):** 10.8 x 6.4 x 2.3cm/4.25 x 2.5 x .91in

**INPUTS/OUTPUTS**

- (1) RJ45 network input jack
- (1) RJ45 network output jack
- (1) captive screw power output terminal
- (1) power input jack input/output terminal (3 position)

**MIDSPAN INJECTOR REQUIREMENTS**

**POE Type:** High Power Midspan Injector

**POE Standard:** POE IEEE 802.3af

**Device Pin-out:** 1pins 4,5 DC power (+), pins 7, 8 DC power (-)

**POE Protection:** Over Temp, Over Current, Over/Under Voltage

**Shielded RJ-45 Ports:** 16 or 24 Ports

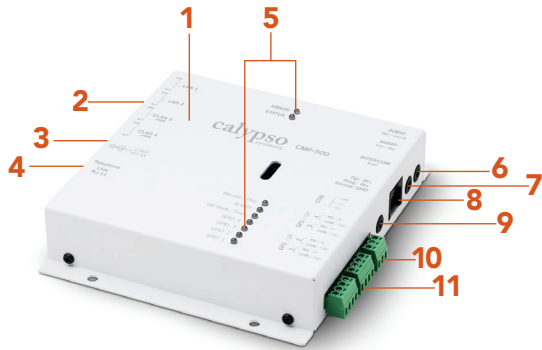
**Power:** > 15W per Port (e.g., Tycon 16.8E, 350mA @48V)

- 1 Keeps paging and other emergency alert functions running during a power outage**
- 2 Network power/data input**
- 3 Network pass-through output**
- 4 11.2V / 1.34A (15W) output**
- 5 12VDC input**

Unlike typical POE extractors, the PD-20W supplies amplifiers with the higher peak power levels they require. Offers 12VDC pass-through power for amplifier support when POE is not required, then automatically and instantly switches to POE if mains power fails.

**Works with any qualified third-party POE midspan injector and POE-enabled network switch**

Supports variable POE requirements and network connectivity for CM3000, CM800 and CM800S. Installs as a bridge between the POE cable and the network endpoint, and breaks out both network and power signals from the incoming cable, sending them on as needed for amplifier support.



**1 Adds all-call paging from any phone**  
Users simply dial a unit extension or hotkey and enter a security code to start an all-call page from any phone — even cell phones.

**Dial-in device control and automated actions**

In addition to simple all-call paging, you can designate up to 999 keycodes to take even more powerful actions — for example, narrow your live page to a specific zone, play a pre-recorded message over the speakers, turn projectors on or off, trigger door locks, or change digital signage content.

**Universal phone compatibility**

Works with cell phones, analog PBX, and any SIP phone system via a standard ATA bridge.

**No programming required**

An onboard browser-based interface lets you easily assign actions to key codes, set up custom outbound messaging and ring delays, and define passwords.

**Built-in intelligence**

Includes essential features like telephone line fault monitoring, Calling Party Control/Open Loop Disconnect detection, and silence timeout.

- 4-port network switch
- Custom audio prompting for incoming calls
- Serial control
- LED indicators

- 2 4-port network switch**
- 3 12VDC input**
- 4 RJ11 telephone line input**
- 5 Monitoring LEDs**
- 6 Mic/line audio input**
- 7 Line audio output**
- 8 Intercom**
- 9 IR remote output**
- 10 Serial control**
- 11 GPO/GPI relay terminals**

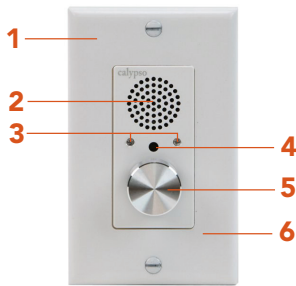


**SPECIFICATIONS**

**Network support:** 10/100Mb/s (auto sensing)  
**Compatibility:** Analog (PBX) with DTMF tone decoding, SIP (via ATA bridge), mobile  
**Power supply:** 12VDC at 3.5A  
**Size (WxHxD):** 13 x 14.9 x 2.86cm/  
 5.125 x 5.875 x 1.125in

**INPUTS/OUTPUTS**

- (4) RJ45 network input jacks
- (1) 12VDC power jack
- (4) RJ11 phone jack
- (1) 3.5mm mic/line audio input jack
- (1) 3.5mm line audio output jack
- (1) RJ45 intercom input jack
- (1) 3.5mm infrared remote output jack
- (1) captive screw serial control terminal
- (4) captive screw GPO/GPI relay terminals



- 1 Fits standard single-gang enclosure**  
Easy to add to hallways, gymnasiums or auditoriums for emergency communications where phones are not always available. Can also be used in outdoor areas with a standard weather proof enclosure case. Compatible with Leviton Decora® plates.
- 2 Integrated speaker**
- 3 Status LEDs for power and mic activity**
- 4 Integrated mic**
- 5 Push-to-talk button with rotary volume**
- 6 Easy RJ45 power/signal connection to CM3000**



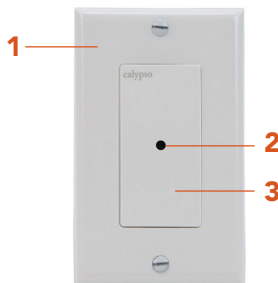
**SPECIFICATIONS**

**Power supply:** +12V, 100mA, over UTP Cat 5e from CM3000

**Size (WxHxD):** Fits standard North American single-gang electrical boxes

**INPUTS/OUTPUTS**

- (1) RJ45 input jack



- 1 Fits standard single-gang enclosure**  
Ceiling-mounted, hands-free, talk-back microphone that allows a teacher to answer an intercom call from anywhere in the classroom. Compatible with Leviton Decora® plates.
- 2 Integrated omnidirectional mic**
- 3 Easy RJ45 power/signal connection to CM3000**



**SPECIFICATIONS**

**Power supply:** +12V, 20mA, over UTP Cat 5e from CM3000

**Size (WxHxD):** Fits standard North American single-gang electrical boxes

**INPUTS/OUTPUTS**

- (1) RJ45 input jack