



The HI-Focus Procedure Cart



The HI-Focus Procedure Cart



Features and Improvements Include:

- 5" Dual-Wheel Casters with two directional-locking casters and two locking casters
- Corrosion-proof polymer material makes it easy to disinfect
- 10 Tiers of configurable storage
- Integrated steering handle on left and right side of cart
- Self-closing drawers
- Various color options available
- Electronic locking available with up to 30 unique user codes
- Manual breakaway option available for keyless entry
- Side and Rear wall Accessory options available

One Cart...



**shown with 3-2-1 drawer configuration*

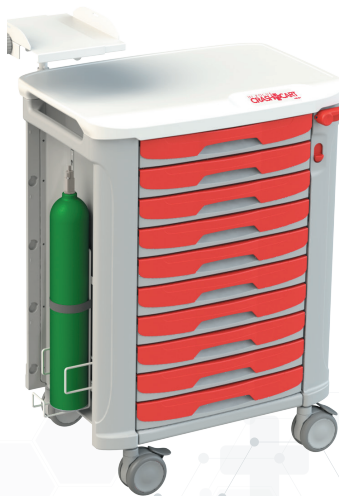
- **Non-powered Emergency Crash Cart**
- **Procedure Cart for Various Departments**
- **Supply Cart**
- **Color-Coded Drawers for Immediate Access to Vital Supplies or Products**
- **Customizable to Fit Your Needs**

Howard Medical, with its rich history of manufacturing Medical Point-of-Care carts, introduces the all new HI-Focus Procedure cart. The HI-Focus is customizable to fit the procedural and storage needs of your facility. Available with a manual breakaway lock for keyless access during emergency situations or an electronic lock with keypad and digital display, the cart allows for a flexible configuration of drawers, drawer layout, and accessories. The HI-Focus is the perfect fit for any department in today's healthcare environment.

...Multiple Configurations



** Shown in blue with 3-2-1 drawer with overbridge rail and small flip-out bins*



**Shown in red with 10-0-0 drawer configuration with defibrillator tray and oxygen tank holder*



**Shown in yellow with 3-2-1 drawer configuration with overbridge rail, large flip-out bins, trash bin, and utility bin*



**Shown in gray with 0-2-2 drawer configuration*

Configurable for Any Use Case



Anesthesia



Procedure/Treatment



Isolation



Emergency / Crash Cart



Critical Care

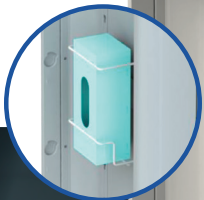


Lowest Cost / Basic Procedure

Available

Available Accessories Include:

- large and small flip-out bin storage for the overbridge rail
- powerstrip with mounting bracket
- CPR board
- defibrillator tray



Storage Configurations



0-2-2



0-5-0



1-0-3



1-3-1



5-1-1



4-3-0



8-1-0



2-4-0



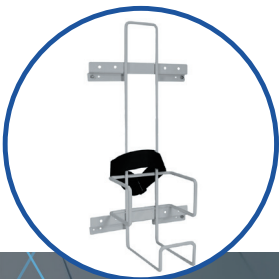
4-0-2



6-2-0

*more possible configurations available

Accessories



- utility bin
- trash can
- oxygen bottle holder



- tilt-out side bin
- suction pump shelf
- glove box holder



- tip bins
- 4Q sharps bracket
- sani-wipe holder



- IV pole
- extra security seals (100 pack)
- removable drawer inserts

HI-Focus Comparison

Model Comparison



GENERAL SPECS

Base	33"W x 22.1"D
Worksurface	31.5"W x 18.2"D
Slide-Out Tray	13"W x 12.5"D
Height	41.1"

LOCKING OPTIONS

Electronic Locking	✓	
Breakaway Locking		✓

CLINICAL SPECIFICATIONS

5" Dual-Wheel Casters with Two directional-locking casters and two locking casters	✓	✓
10 Tiers of Configurable Storage	✓	✓
Side Wall Accessory Brackets	✓	✓
Rear Wall Accessory Brackets	✓	✓
Integrated CPR Board Holder on Rear Wall		✓

ERGONOMIC SPECIFICATIONS

5" Casters with 2	✓	✓
Integrated Push Handles	✓	✓
Self-Closing Drawers	✓	✓

TECHNICAL SPECIFICATIONS

Shipped Fully Assembled	✓	✓
Digital Display with Keypad	✓	
Manual Override Key	✓	
4 Accent Color Options	✓	✓
3-Year Warranty	✓	✓

Warranty

Howard's commitment to providing unmatched customer service and support continues long after a sale is final. Our technology staff provides 24/7 technical support (excluding US holidays) for as long as you own your Howard product. Our friendly, US-based team of experts will answer your questions about the product, hardware setup, or installation, and with telephone hold times of typically less than a minute.

Standard Limited Warranty:

- 3-year mechanical

Other Peripheral Devices:

- See manufacturer's warranty

Upgraded Limited Warranty:

- 5-year mechanical

For our full warranty information, please visit <https://www.howardcomputers.com/support/warranties.cfm>

Professional Services

The Howard Medical Professional Services Team has technical specialists nationwide and is known as one of the industry's premier service providers, with a history of successfully serving clients for more than a decade. Our dedicated employees are completely focused on customer satisfaction, giving Howard Medical the resources to provide a solution that is just right for you. Whether your project is large or small, single-site or across multiple facilities, you can trust our experience to work for you!

- Annual Fleet Audit
- Care Protection Service Solutions
- Complete In-Factory Integration
- Equipment Cleaning With Disinfectants
- Equipment Disposal
- In-Factory Imaging
- In-Service Training
- On-Site Repair
- On-Site Troubleshooting
- Preventative Maintenance
- Technical Training
- Technology Installation
- Technical Integration & Setup Training/Consultation
- White-Glove Delivery With Trash Removal

Care Protection Service Solutions



**Silver Service
Level Agreement**



**Gold Service
Level Agreement**



**Platinum Service
Level Agreement**

Howard's Care Protection Service Solutions give any facility the ability to choose the level of service that works best for them. For information regarding our full service solutions, please visit https://www.howardcomputers.com/Support/pro_services.cfm

Howard Medical Point of Care Carts



Designed and built in Ellisville, Mississippi for over 20 years. Backed by our nationwide network of Howard Certified Technicians, as well as 24/7 phone-based support.

SALES REPRESENTATIVE:

TERRITORY/REGION:

EMAIL:

PHONE:

Web:
www.howard.com

Customer & Technical Support:

Toll Free: 1.888.323.3151
24/7 (excluding US holidays)

General Information:

Toll Free: 1.888.912.3151

