

CUSTOMIZED CARE ANYWHERE

Health

Lenovo™



Intel Inside.[®]
Powerful Productivity Outside.



Intel Inside.[®]
Powerful Productivity Outside.



LENOVO HEALTH: DELIVERING VALUE-BASED CARE

As your proactive IT partner, Lenovo Health powers the delivery of value-based care. Our premier product portfolio is tailored for the healthcare industry and spans mobility, security and cloud solutions to help you customize care virtually anywhere.

We collaborate with healthcare organizations ranging from small physician practices to large complex health systems to senior care communities in more than 160 countries worldwide.

RECOGNIZED HEALTH IT INNOVATOR

Lenovo has been recognized by IDC, Gartner, Boston Consulting Group, Technology Business Review and others for our innovations, server performance, customer satisfaction and supply chain efficiency — providing the level of reliability and serviceability that our healthcare customers require.



WHAT SETS US APART

COMMITTED TO
HEALTHCARE

**FORTUNE'S
TOP 10 MOST
ADMIRED
COMPANIES**

(2015)



1,600

HEALTHCARE CUSTOMERS
ACROSS NORTH AMERICA

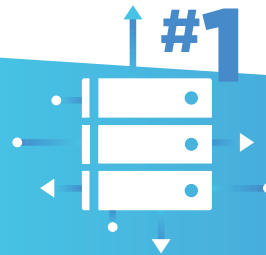


SERVING THE
HEALTHCARE COMMUNITY

GLOBAL IT LEADER
AND INNOVATOR



MOST INNOVATIVE COMPANIES
(Boston Consulting Group, 2015)

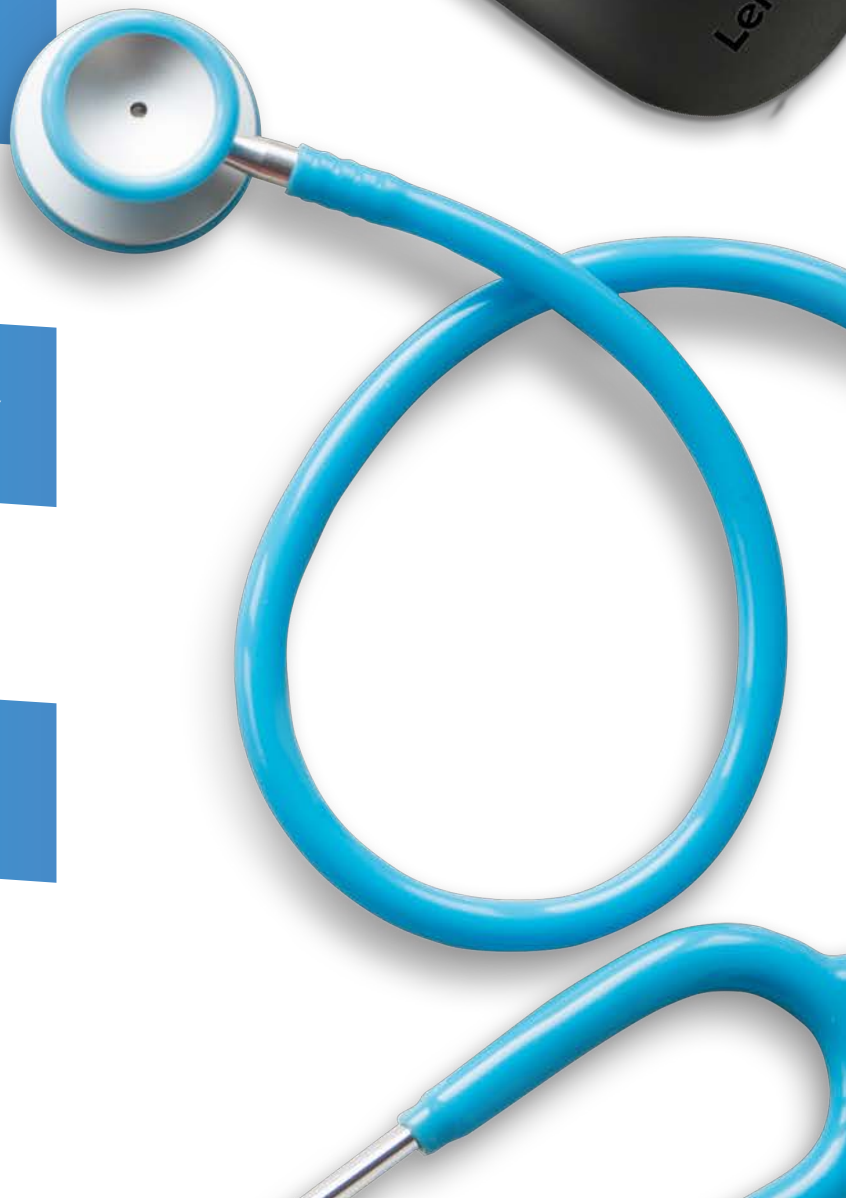


IN RELIABILITY FOR LOWEST
DOWNTIME OF ANY X86 SERVERS

(ITIC Global Server Hardware Reliability Report, 2015-16)



WORLDWIDE PC
MANUFACTURER (IDC)



POWERFUL PORTFOLIO OF PARTNERS



COMPATIBLE WITH STANDARDS OF THE TOP EHR SOFTWARE INNOVATORS



COLLABORATE WITH WORLD-CLASS TECHNOLOGY ISVs AND VISIONARIES

HIPAA



COMPLIANT SOLUTIONS



Intel Inside.[®]
Powerful Productivity Outside.

HEALTH SOLUTIONS ACROSS THE CONTINUUM OF CARE



PATIENT ROOM

Optimize patient engagement, streamline workflows, and improve care delivery and accuracy of diagnoses



CHECK-IN AND DISCHARGE

Automate and secure patient admissions, billing and payment processes and help visitors navigate healthcare facilities



Intel Inside.[®]
Powerful Productivity Outside.

DIAGNOSTICS (Radiology/Medical Imaging)

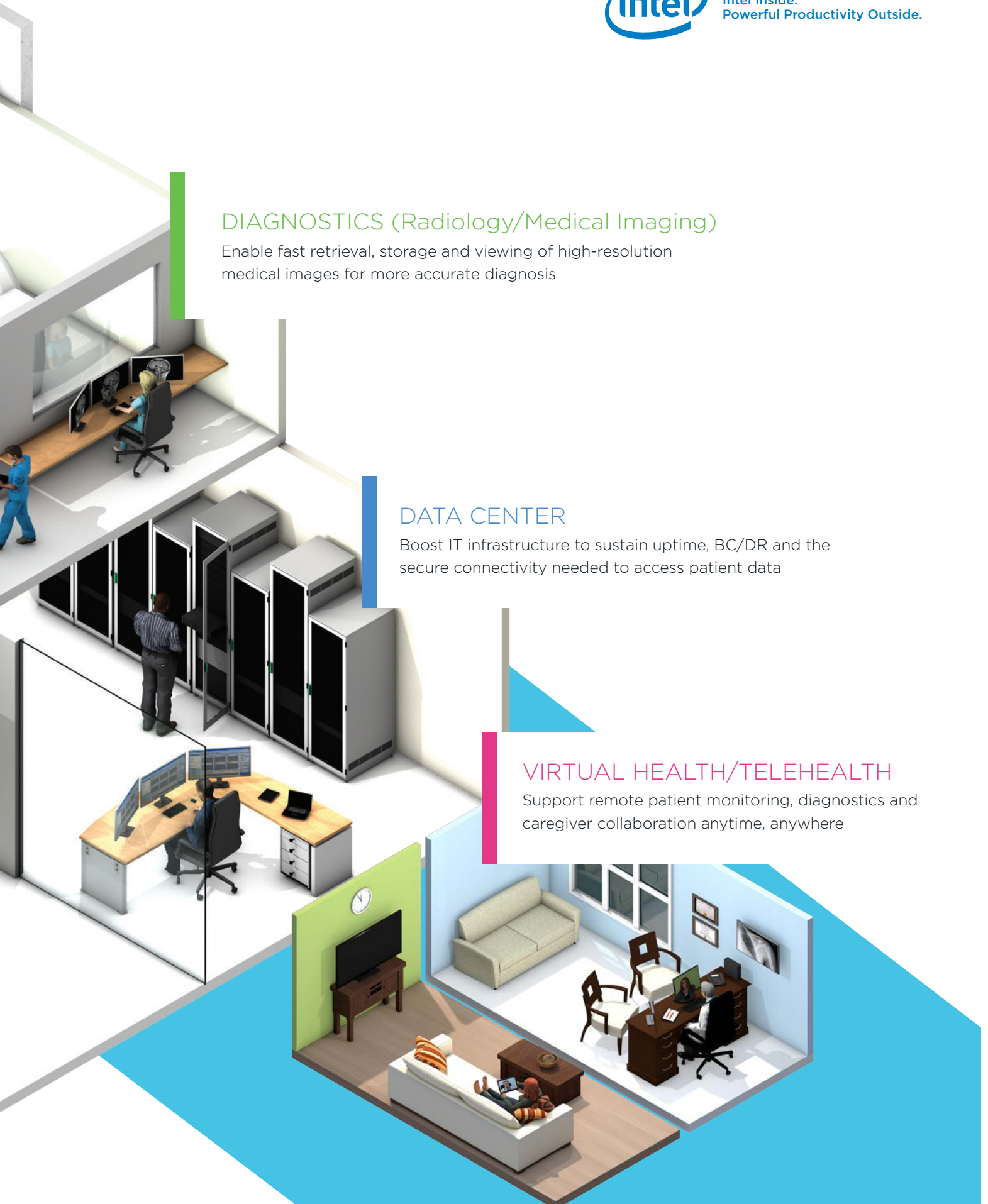
Enable fast retrieval, storage and viewing of high-resolution medical images for more accurate diagnosis

DATA CENTER

Boost IT infrastructure to sustain uptime, BC/DR and the secure connectivity needed to access patient data

VIRTUAL HEALTH/TELEHEALTH

Support remote patient monitoring, diagnostics and caregiver collaboration anytime, anywhere



CUSTOMIZED CARE ANYWHERE

We are committed to the healthcare industry and understand the challenges our customers face in delivering quality care.

Our focus is to provide reliable solutions that help health delivery organizations thrive within an ever-changing healthcare landscape – whether it's to improve their IT infrastructure, empower clinicians or help patients manage their own care.

TOP IT CHALLENGES IN HEALTHCARE

We help healthcare organizations achieve better patient outcomes with technology and solutions that address today's healthcare challenges and meet the goals of tomorrow's care.



PATIENT EXPERIENCE
AND ENGAGEMENT



VALUE-BASED CARE
AND REIMBURSEMENT



QUALITY OF CARE/
CLINICAL OUTCOMES



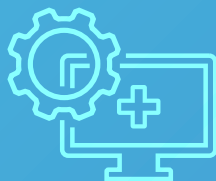
CARE TEAM
COORDINATION



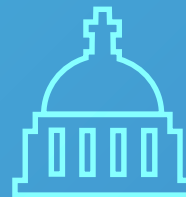
OPERATIONAL
EFFICIENCY



DATA SECURITY AND
MEDICAL IDENTITY



INTEROPERABILITY/
CONNECTED CARE



REGULATORY
COMPLIANCE



CLINICAL WORKFLOW
PRODUCTIVITY



VIRTUAL CARE
AND MOBILITY



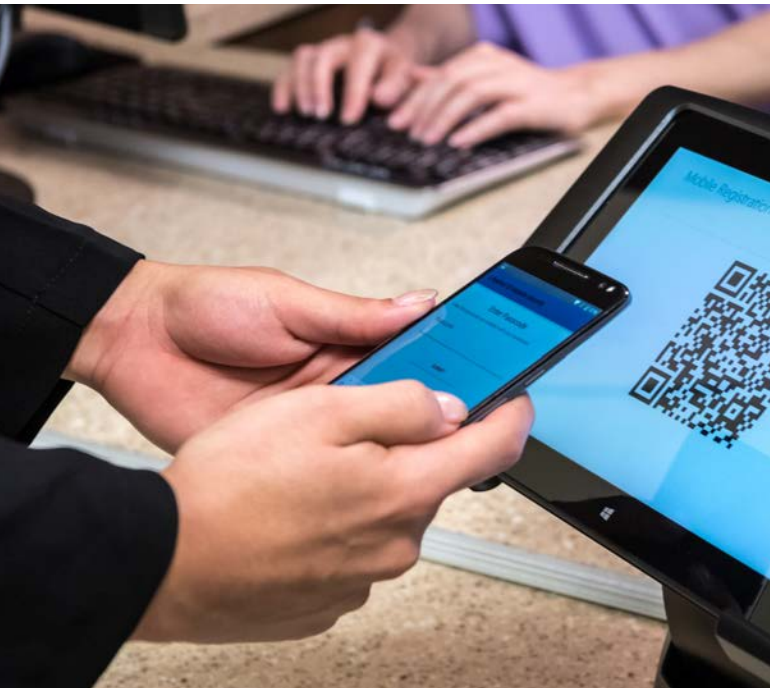
POPULATION HEALTH
MANAGEMENT



Intel Inside.[®]
Powerful Productivity Outside.

ADMINISTRATION

Lenovo Health offers patient identity, payment and digital signage solutions that help automate admissions with greater security, streamline billing and payment processes, and offer innovative ways to help visitors navigate healthcare facilities.



CLINICAL

Our secure, reliable and mobile solutions help clinicians actively engage patients, deliver high-quality care and enhance diagnostics/treatment of health conditions with greater speed and accuracy at the point of care.



VIRTUAL CARE

Our virtual care solutions give health organizations the ability to monitor patients from their homes, allow patients to access their PHI/EHR records and other health data, and facilitate telehealth videoconferencing and collaboration between clinicians and patients.

A HEALTHCARE SOLUTION PORTFOLIO FOCUSED ON YOUR NEEDS

Our solutions address today's healthcare challenges while meeting the goals of tomorrow's care by helping healthcare organizations:

- Achieve a lower total cost of ownership (TCO) while driving higher quality
- Ensure systems reliability to achieve continuous uptime
- Empower patients and populations to manage their health



ALIGNING SOLUTIONS WITH HEALTHCARE DEMANDS

Cloud & Data Analytics

We offer cloud services, virtual data infrastructure (VDI), and converged and hyperconverged solutions via partners like Nutanix to help healthcare organizations simplify data center management, drive substantial IT cost savings and accommodate multiple platforms.

Security & Manageability

Our Authoritative Identity Management exchange (AIME), with partners like LifeMed ID, provide a single, true and secure unique health safety identifier upon registration across the continuum of care — regardless of EHR implementation.

Mobility & IoT

As IoT evolves, we will continue innovating to help healthcare organizations better monitor their patients in the hospital and remotely to manage chronic diseases. Our mobility solutions also offer clinicians the benefits of more productive, efficient workflows by equipping them with the right devices to streamline care with speed and accuracy.

Accessories

Lenovo Health's device portfolio — coupled with compatible accessories including carts, cases, wall-mounts, arms and security mounts — streamlines data access and sharing at the point of care. The benefits are enhanced staff efficiency, improved care delivery and accuracy, greater patient satisfaction and engagement, and maximized mobility.



The **LenovoProven Program** ensures seamless solution integration with carts, arms and wall-mounts from top medical accessory manufacturers. We test each device for physical fit, basic usability and device power source consistency with specification. Our goal is to match the right device with the right healthcare worker by supporting whichever accessories our customers use.



CORE TECHNOLOGIES AND SERVICES FOR UPTIME — ALL THE TIME



Lenovo Health provides a breadth of core technologies powered by Intel® technology to support more efficient healthcare workflow, simplify and manage the rigorous demands of data center operations, and ensure that your IT operations are running securely and reliably. These include:



INFRASTRUCTURE SOLUTIONS

World-class server (rack and tower, converged and blade), hyperconverged, storage and networking solutions from Lenovo Health mean continuous uptime and scalability, high availability and disaster recovery, and strong connections for better care and collaboration.



CLIENT SOLUTIONS

From devices to desktops, Lenovo Health helps healthcare providers access the data needed to make informed decisions at the point of care or on the go. The portability, versatility and lightweight features of our mobile models make it easy to provide care anywhere.

PREMIER SERVICES AND SUPPORT

Lenovo Health helps protect your IT investment with:



WARRANTIES



TECH SUPPORT



FACTORY INTEGRATION



PROSERVICES



Intel Inside.[®]
Powerful Productivity Outside.



To learn more, please visit
www.lenovopartnernetwork.com/health



Follow us on Twitter @LenovoHealthUS



Email Lenovo Health at HealthTeam@Lenovo.com

Sponsored by Lenovo and Intel®

© 2017 Lenovo. All rights reserved. Lenovo is a trademark of Lenovo in the United States, other countries, or both. Intel and the Intel logo are trademarks of Intel Corporation in the U.S. and/or other countries. All other trademarks are the property of their respective owners. V2.00 April 2017.

Health

Lenovo™



Intel Inside.®
 Powerful Productivity Outside.