

SPECTRA D500 - NETWORK STORAGE APPLIANCE

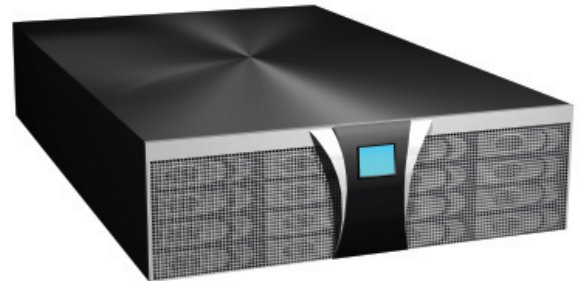
DESIGNED FOR SECONDARY STORAGE

The Spectra D500 Network Storage appliance is designed specifically for secondary storage, to make it easy to stage data to RAID disk. The D500 appliance permits very rapid data recovery and also can write data to a tape archive. The Ethernet-attached D500 appliance runs on both UNIX networks with NFS and Windows with CIFS. In fact, the D500 appliance has Microsoft® Windows Storage Server 2003 already installed. The D500 appliance offers up to 8 TB of uncompressed storage, protects data using RAID 6, and requires only a few inches (3U) of rack space. With your data staged to disk, your data is online and easily retrieved, and can be written to tape without putting demands on primary servers and always scarce network bandwidth.

The Top Benefits of the Spectra D500 Appliance Disk

- Backup data to disk easily, seamlessly, and affordably
- Use the D500 appliance as a master or media server, or both
- Use any backup or HSM software application to backup data using the D500
- Protect data with RAID 6
- Stage data on the D500 appliance as a disk target for any period—30, 60, or 90 days—before archiving to tape
- Connect the D500 appliance quickly to your Ethernet network
- Use the D500 appliance with Windows/CIFS or UNIX/NFS
- Connect the D500 appliance easily to Spectra libraries using SCSI for a fast, complete secondary storage archival system
- Manage the Spectra D500 securely from anywhere using a Web browser to display the graphical BlueScale interface
- No learning curve--the graphical BlueScale interface is the same that you use to manage a Spectra tape library

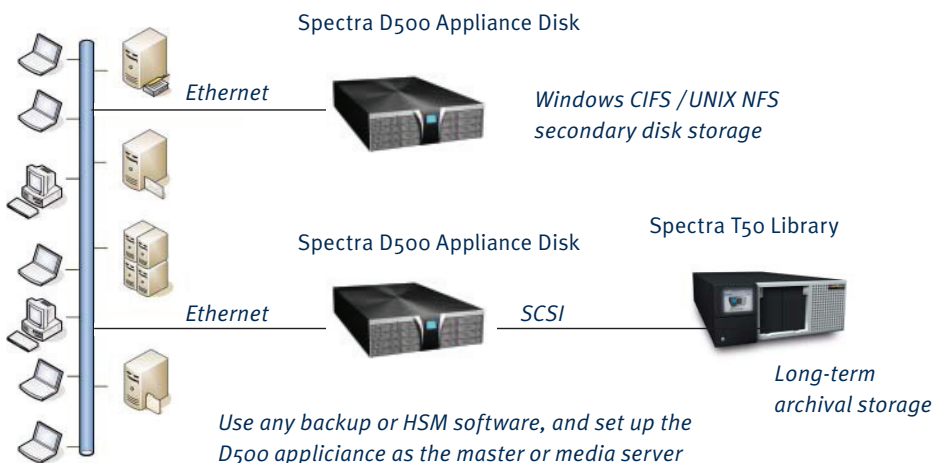
Spectra D500 Network Storage Appliance



You may choose to combine the D500 with a Spectra T-Series library. This complete secondary storage solution permits data to be stored in the D500 appliance disk, then through a fast SCSI connection to the T50 library to archive the data. All of this can be managed through a secure Web browser login from anywhere using an intuitive, graphical interface--the same interface you use to manage Spectra libraries. Spectra D500 appliance disk and libraries make disk-to-disk-to-tape backup easy, fast, and affordable.

SPECTRA LOGIC

Spectra D500 Network Storage Appliance



Specifications*

Capacity Options:

- 2 TB (8 250 GB SATA drives)
- 4 TB (16 250 GB SATA drives)
- 8 TB (16 500 GB SATA drives)

RAID Level: RAID 6

Dimensions:

- Height: 5.25"(3U)/13.3 cm
- Width: 19"/48.3cm
- Depth: 27"/ 68.6 cm

Power: 650 W N+1

Two Host Interfaces:

- 1Gb Ethernet connections
- Library Interface: LVD SCSI