

Netmotion Wireless Mobility XE™

Award-Winning, Best-in-Class Mobile VPN Solution



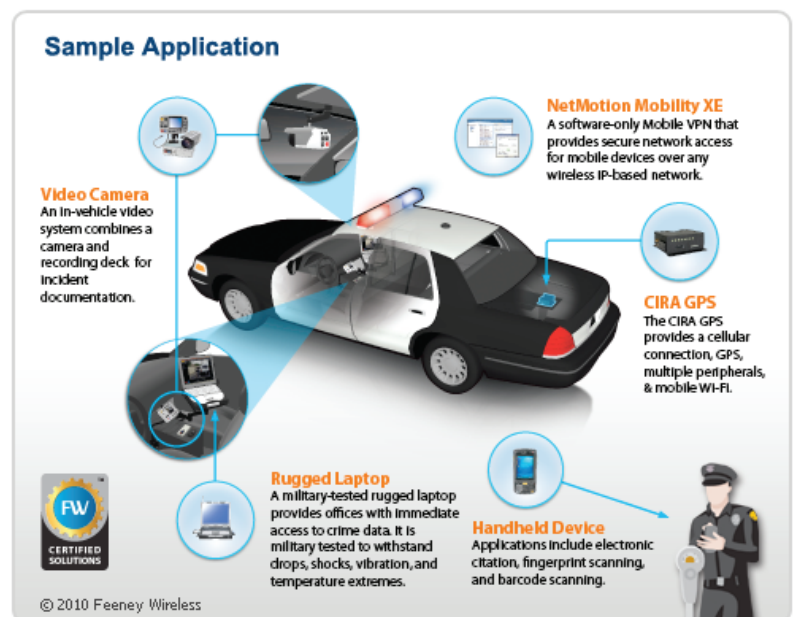
Government on the Go

Applying mobile computing to a broader range of public services.

In government, law enforcement and first responders have always been the prevalent users of mobile computing technologies. As mobile computing has evolved and equipment and service costs have dropped, more government agencies are reaping the productivity increases garnered by equipping workers with mobile devices.

Here's how government agencies have extended new capabilities to their workers, through mobile data access made more reliable, secure and easily managed through Mobility XE:

- **Law Enforcement** – Computer-aided dispatch (CAD); viewing maps and turn-by-turn directions; accessing federal Criminal Justice Information System data; running license checks; filing incident reports; accessing photos of suspects
- **Emergency Medical Services** – Gathering clinical data in the field and transmitting it directly to the hospital emergency department, to prepare for and speed treatment on arrival
- **Fire Departments** – Computer-assisted dispatch; transmitting directions and incident descriptions; accessing response pre-plans that include building maps, information on suppression systems, hydrant locations, utility shutoff locations and hazardous materials on-site
- **Public Works** – Coordinating and scheduling crews and equipment; accessing maps, plans and schedules; updating work orders and inspection data from the job sites
- **Health, Safety and Environmental Inspection Departments** – Updating reports and data records; filing violations and remediation plans; eliminating paper forms and repetitive data entry
- **Child and Family Services** – Handling the increasing case load by replacing paper notes and records, and decreasing the related administrative burden



NetMotion Wireless Mobility XE works with Feeny Wireless to provide a full service, certified solutions for law enforcement.



To receive a quote or for more information, contact a Howard Representative at 888.912.3151



Safety and comfort for you and your K9 partner.

K9 Transport Systems by Havis

- Unique white powder coat finish
- Easy to install
- Radius corners, molded edges and proper sized ventilation holes
- Fabricated from heavy-duty aluminum for long lasting durability
- Designed to maximize officer room and visibility
- Kits are a single compartment module with aluminum side door panels, WGI series interior hinged window guards, rubber matting and dome light with switch. They must be assembled in the vehicle. Installation is quick and easy.
- All kits have full height front sliding door except Impalas and K9/PT models which have half height door.



To receive a quote or for more information, contact a Howard Representative at 888.912.3151

