

The Samsung logo is positioned in the top right corner of the advertisement. It consists of the word "SAMSUNG" in white, uppercase letters, set against a dark blue, horizontally-oriented oval background.

Samsung Chromebook: Cloud Built In

Innovation is the best  
classmate.



# Why Samsung for Education

At Samsung, we believe it's important to contribute to the education of today's youth and to help foster a greater enthusiasm for learning. It's a commitment that comes through in every one of our best-in-class education products. From durable laptops that let learning happen anywhere, to brilliant monitors that bring lessons to life, to reliable printers that deliver vibrant imagery, Samsung devices are designed to engage young minds, inspire imaginations and elevate understanding.

Our newest innovations, the Samsung series of Chrome devices, give students, teachers and administrators a simple solution for fast and easy-to-manage computing. There's a Samsung Chrome device for everyone in the classroom, and each one helps teachers spend more time teaching and less time managing technology.

## What is a Samsung Chromebook and Chromebox?

Samsung Chromebooks and Chromeboxes are a new type of computer from Google and Samsung. Chromebooks look and feel like laptops, while Chromeboxes are small computers to which you add your own monitor and keyboard. The powerful processors on each deliver exceptional performance and battery life in ultra-slim form factors. And since they're from Samsung, reliability and image quality are outstanding. Simple and intuitive to use, Samsung Chromebooks and Chromeboxes give students and teachers access to the educational apps and resources of the web to help extend learning.

### Chrome OS at the Core

 Samsung Chrome devices run Chrome OS, an operating system that has multiple layers of security, built-in cloud storage and the most popular Google products for education built-in.



### Starts Fast, Stays Fast

It takes less than 10 seconds for Samsung Chromebooks to boot up, and they resume instantly. Unlike other computers, they avoid the bloat of old software and don't slow down over time.



### Best of Google Built-In

Chromebooks come with leading Google products built-in, like Search, Gmail and Docs, so students and teachers can learn, create and collaborate, right out of the box.



### Long Battery Life (Up to 7 Hours)

Learning happens in places other than traditional classrooms. With up to 7 hours of battery life (XE303C12 models), students won't be tethered by a power cord.



### Lower Cost of Ownership

There's no need to buy software licenses, servers, security solutions and maintenance plans, so the total cost of ownership can be 70% lower than that of a traditional computer.



### Learn in HD

Since your Chromebook is a Samsung, the image quality is outstanding. The high-definition LED displays deliver crisp, sharp text and crystal-clear visuals.



### Always Getting Better

Samsung Chrome devices update themselves automatically, for free, so you always get the latest software and security updates. You'll never need to purchase or install upgrades manually.



### Peace of Mind Included

Samsung Chrome devices are safe from viruses and malware. You don't need to buy and install security software separately. No more wasted class time providing tech support.



### Perfect for Sharing

Students can share a single Samsung Chrome device, yet have a personal experience just by signing in. With multi-user support, each person can easily access their own files, apps and settings.



### Trusted Samsung Reliability

Samsung is known for its reliability. We manufacture the majority of our components ourselves, which allows us to control quality.



### Stay Connected

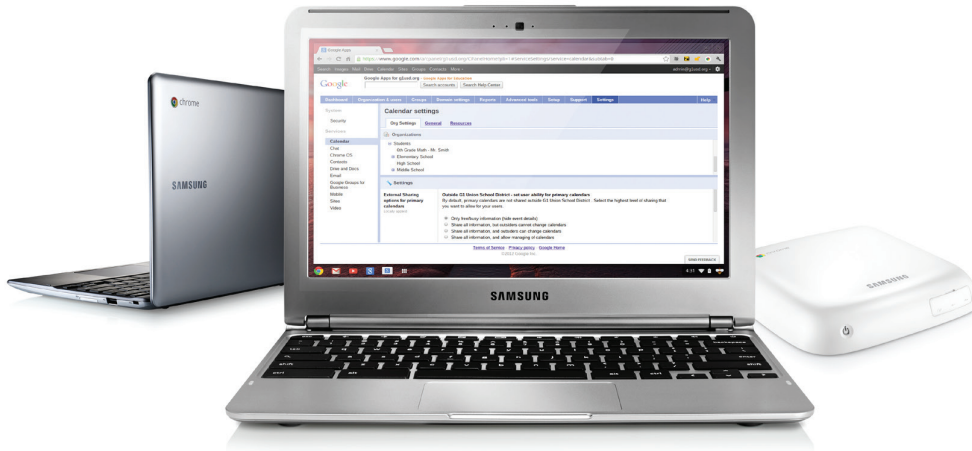
Since it's easy to connect anytime and anywhere with built-in Wi-Fi, students can continue learning after school and at home.



### Comfortable Portability

Chromebooks come with a full-sized chiclet keyboard that makes typing and working easier. They're also optimized for web computing, featuring a dedicated search key and a row of web-enabled keys.

# Centrally Manage Chrome Devices and 1,000s of Educational Apps with Ease



A web-based management console is available as an additional software purchase from Google. For a one-time fee of \$30 (educational pricing) per device, IT administrators can easily deploy and centrally manage a fleet of Chrome devices and users. With just a few clicks, the management console allows you to create user groups, pre-install and block apps, track assets, manage user access, control network access, and customize user features.



## Learn and Work, Right out of the Box

Chromebooks come with apps for everyday tasks in and out of the classroom, and there are thousands more educational apps from the Chrome Web Store ([www.google.com/intl/en/chrome/education/webstore/](http://www.google.com/intl/en/chrome/education/webstore/)). There's no more buying and installing software.



## App Packs for Education

Enjoy a bulk discount when you purchase select Chrome web apps bundled by grade level. Create video projects with GoAnimate. Learn geometric theorems with Geogebra. And so much more. Download the apps at <http://www.google.com/intl/en/chrome/education/webstore/app-packs.html>



## Everything Stays Safe

Samsung Chrome devices come with Google Drive, an online file storage service, so students and teachers can save and access their work safely online and won't need to back up their files manually.

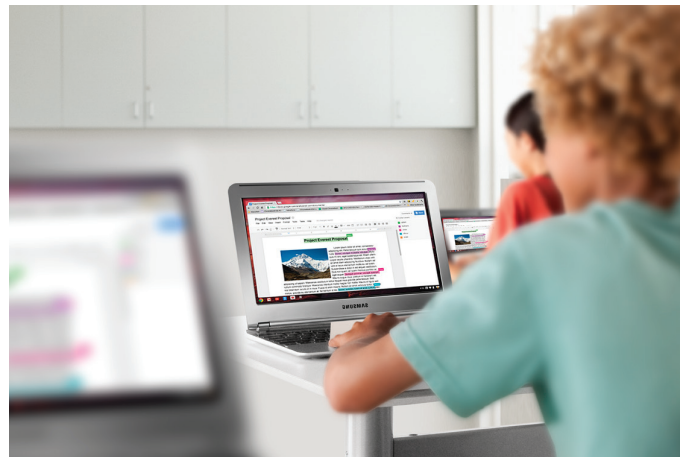


## Everyone Loves Movie Day

Enrich your students and classes with an endless selection of educational videos, literary films and classic songs. For movies and videos, try YouTube for Schools, YouTube EDU and Netflix.



Samsung Chromebooks are ultraportable, sleek laptops for everyday adventures in school and beyond. And because they're as light as 2.4 pounds, as thin as 0.7 inches, and have up to 7 hours of battery life, students can take them wherever they want to go.



For more details on the management console from Google, please visit <http://www.google.com/intl/en/chrome/education/devices/> and submit the Contact Us form.



Samsung Chromebook



Samsung Chromebook 550



Samsung Chromebox

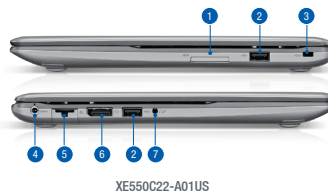
Specifications	XE303C12-A01US / XE303C12-H01US	XE550C22-A01US / XE550C22-H01US	XE300M22-B01US
CPU	Samsung Exynos 5 Dual	Intel® Celeron® Processor 867	Intel® Celeron™ Processor B840
Operating System	Chrome OS	Chrome OS	Chrome OS
Display	11.6" LED HD, 1366 x 768, 16:9, Matte	12.1" LED-Backlit LCD, 1280 x 800 (WXGA)	N/A
Brightness	200 Nits	200 Nits	N/A
CPU Clock Speed (Max.)	1.7 GHz	1.3 GHz	1.9 GHz
CPU Cache	1MB	2MB L3	N/A
Standard System Memory <sup>1</sup>	2GB	4GB	4GB
Memory Type	DDR3L	DDR3 (1333MHz)	DDR3 (1333 MHz)
Hard Drive (Max.) <sup>2</sup>	16GB SSD	16GB SSD	16GB SSD
Speaker	3W Stereo Speaker (1.5W x 2)	4W Stereo Speaker (2W x 2)	2W Mono Speaker (2W x 1)
Web Camera	0.3 MP HD	1.0 MP HD	N/A
USB Ports	1 x USB 3.0, 1 x USB 2.0	2 x USB 2.0	6 x USB 2.0
WWAN	No / Verizon 3G*	No / HSPA, EV-DO, Verizon 3G*	N/A
Wi-Fi	Wi-Fi Only/Wi-Fi and 3G	Wi-Fi Only/Wi-Fi and 3G	N/A
Warranty	1-Year Standard Parts/Labor	1-Year Standard Parts/Labor	1-Year Standard Parts/Labor

### CONNECTIVITY

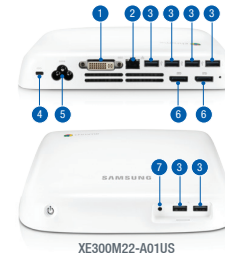
1. USIM (3G model only)
2. USB 3.0
3. USB 2.0
4. HDMI
5. AC Power
6. Headphone/MIC combo
7. SD Card Slot



1. 4-in-1 (SD/SDHC/SDXC/MMC)
2. 2 x USB 2.0
3. Kensington Lock Port
4. AC Power
5. RJ45 (LAN)
6. DisplayPort
7. Headphone Out/Microphone In



1. 1 x DVI
2. RJ45 (LAN)
3. 6 x USB 2.0
4. Kensington Lock Port
5. AC Power
6. 2 x DisplayPort
7. Headphone Out/Microphone In



### ACCESSORIES

Power Adaptor  
Chrome Keyboard



**AA-PA3N40W**  
The standard power adaptor powers your Chromebook and charges your battery. (Compatible with XE303C12-A01US and XE303C12-H01US)



**AA-PA3NS40**  
The power adaptor is required for XE550C22 devices.

AA-SK4PCUB

The full-size keyboard is optimized for web computing, featuring a dedicated search key and a row of web-enabled keys. (Compatible with all Chrome devices.)



**HOWARD** | TECHNOLOGY

www.howardcomputers.com | (888) 912-3151



©2013 Samsung Electronics America, Inc. Samsung is a registered mark of Samsung Electronics Co., Ltd. Specifications and designs are subject to change without notice. Non-metric weights and measurements are approximate. All brand, product, service names and logos are trademarks and/or registered trademarks of their respective manufacturers and companies. Simulated screen images. See samsung.com for detailed information. Printed in USA on 50% recycled (30% post-consumer waste) paper using soy inks. COM-CHROMEBOOKBRO-JAN13T

Speed will vary depending on the CPU and HD configurations, applications used and wireless settings. <sup>1</sup>Total amount of available memory may be less based on configuration. <sup>2</sup>Accessible capacity varies; MB = 1 million bytes; GB = 1 billion bytes; TB = 1 trillion bytes. Please note that a portion of the hard drive is reserved for system recovery, operating system and preloaded content software.

